

For fishing regulation information, please refer to the NHFGD Freshwater Fishing Digest.

Contact: NHFGD Region 4 (Southwest NH), Keene
E-mail: reg4@wildlife.nh.gov Phone: 603-352-9669

HALFMOON POND Hancock

FISHERY: Warmwater **ACRES:** 59

TROPHIC LEVEL: MESO

AVG. DEPTH: 8 **MAX. DEPTH:** 15

SPECIES: LMB,ECP,BBH,BG

ADDITIONAL INFO: Park 1-3 trailers along road

ACCESS: Gravel, shallow, poor turnaround

Please contact NH Dept of Safety, Marine Patrol for info. on water body/boat/motor restrictions:
(603) 293-2037 www.nh.gov/safety

Access site to Public Waters



Cartop

Water access data: NH Office of Planning and Development



Shorebank



Ramp

Bathymetry depth in feet, if available

Bathymetry data provided by the NH Dept. of Environmental Services, Watershed Mgt Bureau

Town boundary

Primary Route

Road or Street

Trail or other

Stream or Shoreline

Surface Water

Wetland

Conservation or Public land

Cleared

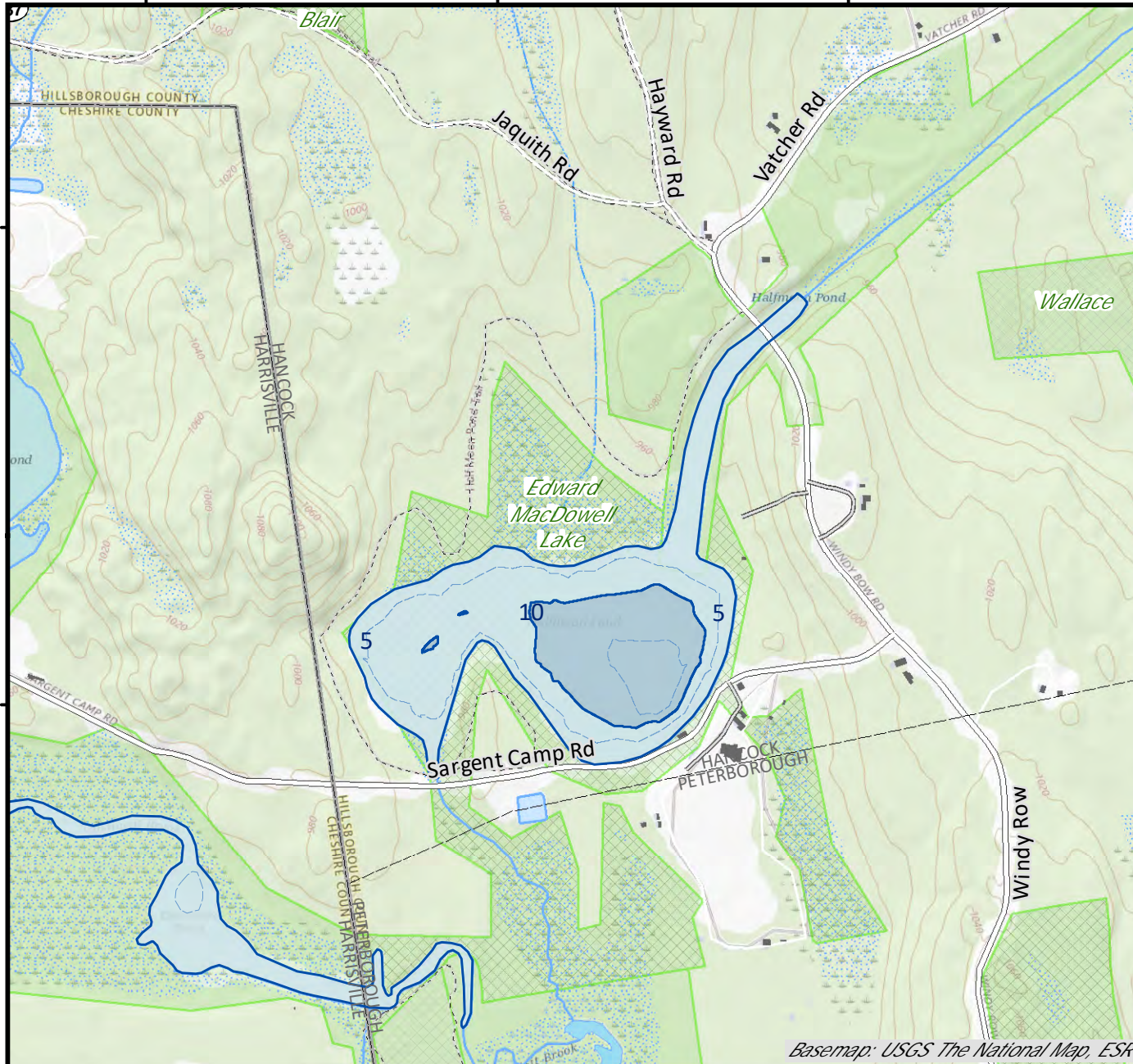
Forest

Contour

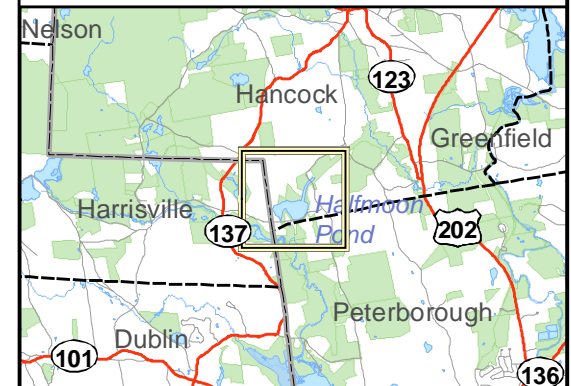
Building

Source: USGS

Restricted Access Conservation



Basemap: USGS The National Map, ESRI



Directions: Rt 137 to Sargent Camp Rd

Base map data from NH GRANIT at Earth Systems Research Center (UNH) and Open Street Map contributors. UNH, NH Fish & Game and cooperating agencies make no claim as to the validity or reliability or to any implied uses of these data. Not intended for navigation. Map prepared: June 2023