

For fishing regulation information, please refer to the NHFGD Freshwater Fishing Digest.

Contact: NHFGD Region 4 (Southwest NH), Keene
E-mail: reg4@wildlife.nh.gov Phone: 603-352-9669

MAY POND Washington

FISHERY: Warmwater **ACRES:** 152

TROPIC LEVEL: MESO

AVG. DEPTH: 5 **MAX. DEPTH:** 25

SPECIES: LMB,ECP,BBH,YP

ADDITIONAL INFO: Small parking lot; Not suitable for motors

ACCESS: Pillsbury SP - May Pond boat ramp

Please contact NH Dept of Safety, Marine Patrol for info. on water body/boat/motor restrictions:
(603) 293-2037 www.nh.gov/safety


Access site to Public Waters

 Cartop


Water access data: NH Office of Planning and Development

 Shorebank

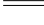
 Ramp


 Bathymetry depth in feet, if available


Bathymetry data provided by the NH Dept. of Environmental Services, Watershed Mgt Bureau


 Town boundary


 Primary Route

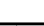
 Road or Street

 Trail or other

 Stream or Shoreline

 Surface Water

 Wetland

 Conservation or Public land

 Cleared

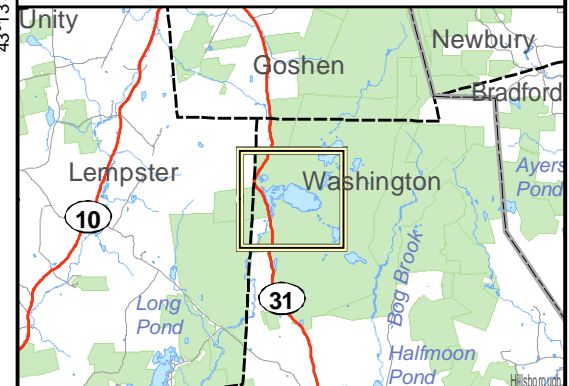
 Forest

 Contour

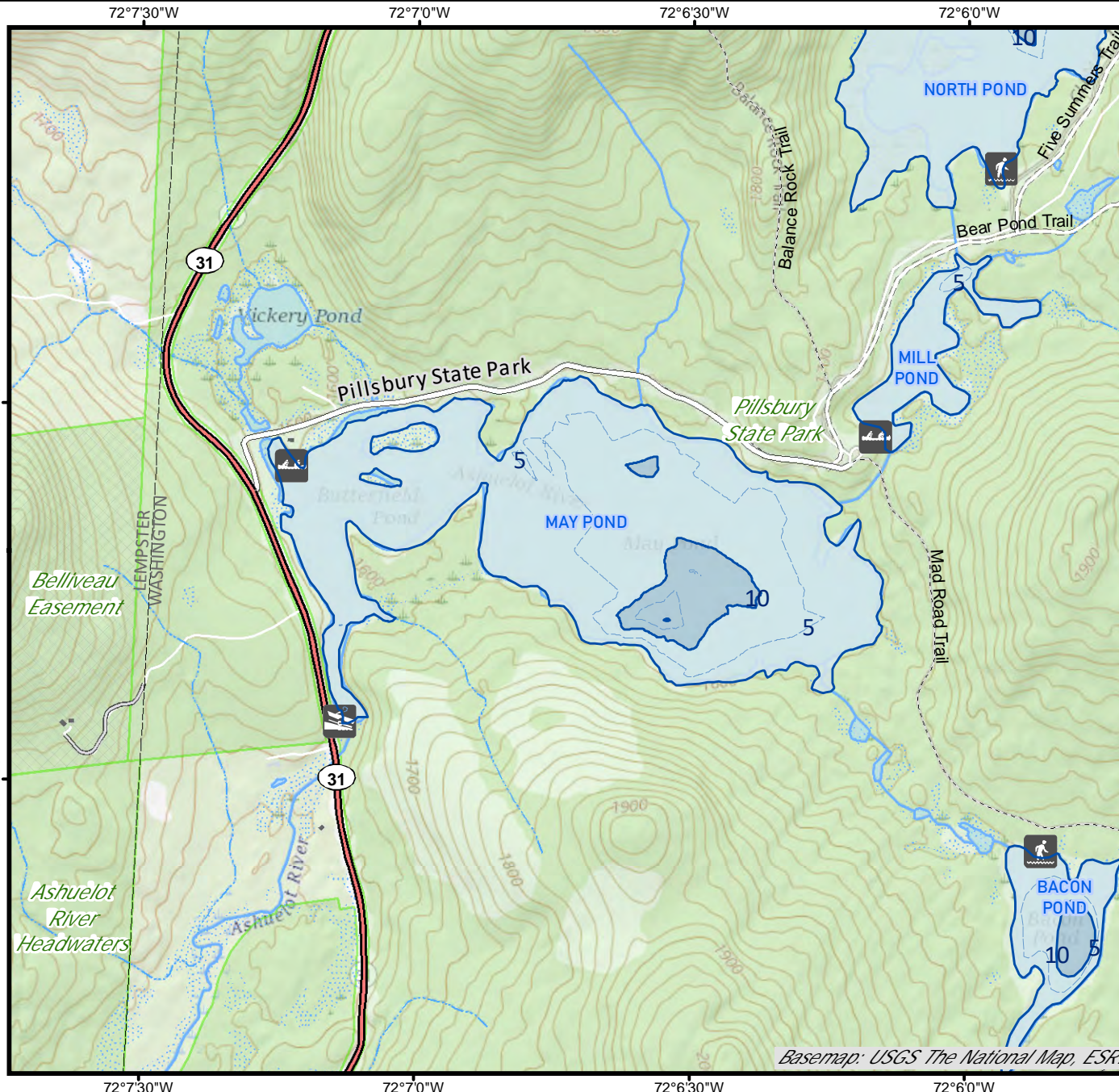
 Building

Source: USGS

 Restricted Access Conservation



Directions: Rt 31, 4 mi N of Washington



Basemap: USGS The National Map, ESRI

Base map data from NH GRANIT at Earth Systems Research Center (UNH) and Open Street Map contributors. UNH, NH Fish & Game and cooperating agencies make no claim as to the validity or reliability or to any implied uses of these data. Not intended for navigation. Map prepared: June 2023