

For fishing regulation information, please refer to the NHFGD Freshwater Fishing Digest.

Contact: NHFGD Region 1 (North Country), Lancaster
E-mail: reg1@wildlife.nh.gov Phone: 603-788-3164

PEARL LAKE Lisbon

FISHERY: Cold/Warm **ACRES:** 61
TROPHIC LEVEL: MESO
AVG. DEPTH: 10 **MAX. DEPTH:** 22
SPECIES: RT,SMB,ECP,BBH

ADDITIONAL INFO: Stocked; Pearl Lake r.o.w.

ACCESS: limited cartop access

Please contact NH Dept of Safety, Marine Patrol for info. on water body/boat/motor restrictions:
(603) 293-2037 www.nh.gov/safety

Access site to Public Waters



Cartop

Water access data: NH Office of Planning and Development



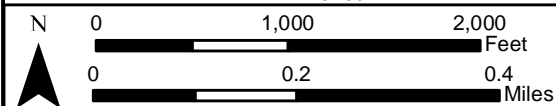
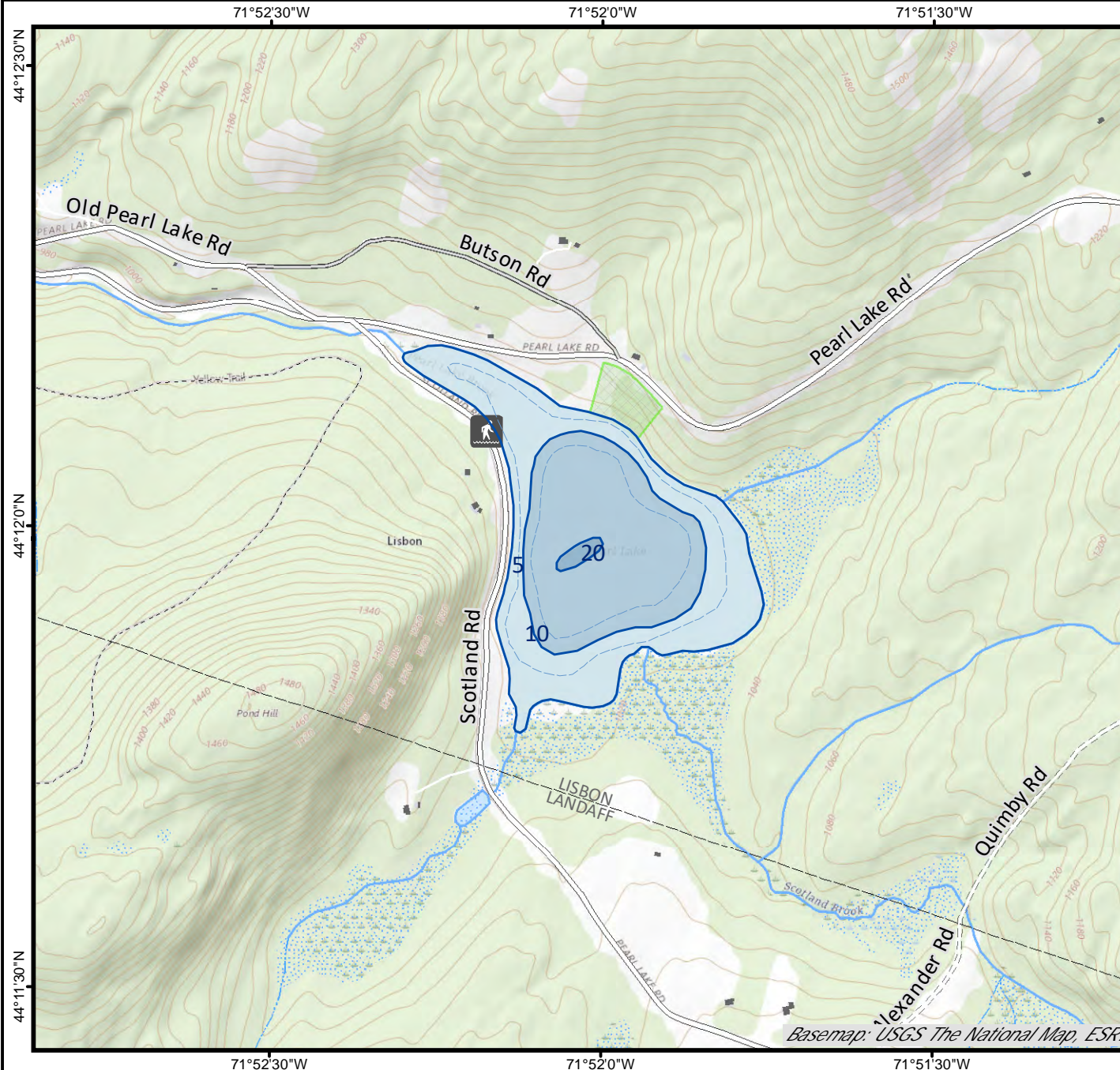
Shorebank



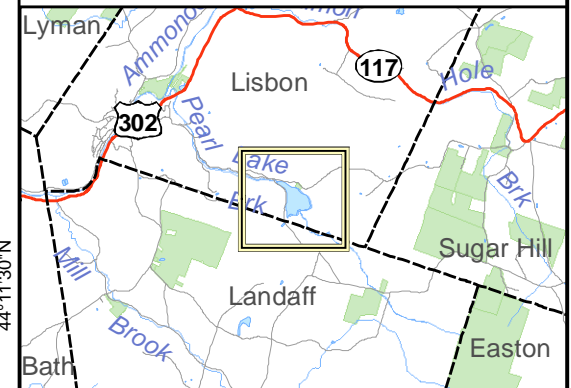
Ramp

Bathymetry depth in feet, if available
Bathymetry data provided by the NH Dept. of Environmental Services, Watershed Mgt Bureau

Town boundary
 Primary Route
 Road or Street
 Trail or other
 Stream or Shoreline
 Surface Water
 Wetland
 Conservation or Public land
 Cleared
 Forest
 Contour
 Building
 Restricted Access Conservation
 Source: USGS



Base map data from NH GRANIT at Earth Systems Research Center (UNH) and Open Street Map contributors. UNH, NH Fish & Game and cooperating agencies make no claim as to the validity or reliability or to any implied uses of these data. Not intended for navigation. Map prepared: June 2023



Directions: Pearl Lake Road