

For fishing regulation information, please refer to the NHFGD Freshwater Fishing Digest.

Contact: NHFGD Inland Fisheries Division, Concord  
E-mail: fish@wildlife.nh.gov Phone: 603-271-2501

## MINE FALLS POND Nashua

**FISHERY:** ACRES: 22

**TROPHIC LEVEL:** EUTRO

**AVG. DEPTH:** 11 **MAX. DEPTH:** 21

**SPECIES:**

**ADDITIONAL INFO:**

**ACCESS:** boat launch, City of Nashua

Please contact NH Dept of Safety, Marine Patrol for info. on water body/boat/motor restrictions:  
(603) 293-2037 [www.nh.gov/safety](http://www.nh.gov/safety)


### Access site to Public Waters

 Cartop

*Water access data: NH Office of Planning and Development*

 Shorebank

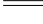
 Ramp


 Bathymetry depth in feet, if available


Bathymetry data provided by the NH Dept. of Environmental Services, Watershed Mgt Bureau


 Town boundary

 Primary Route


 Road or Street

 Trail or other

 Stream or Shoreline

 Surface Water

 Wetland

 Conservation or Public land

 Cleared


 Forest

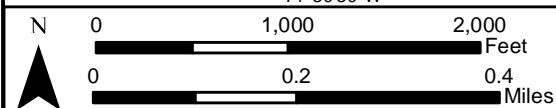
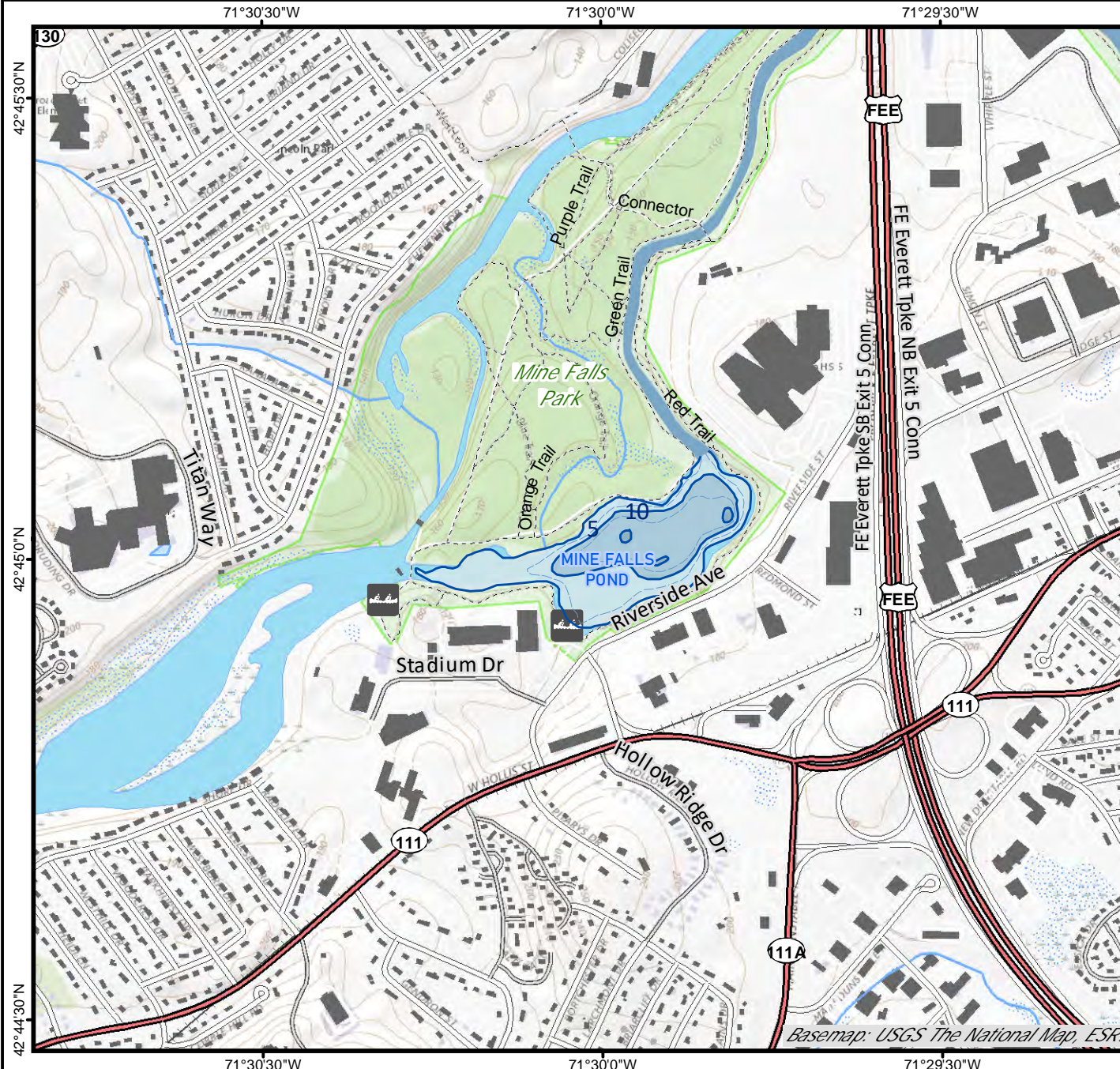
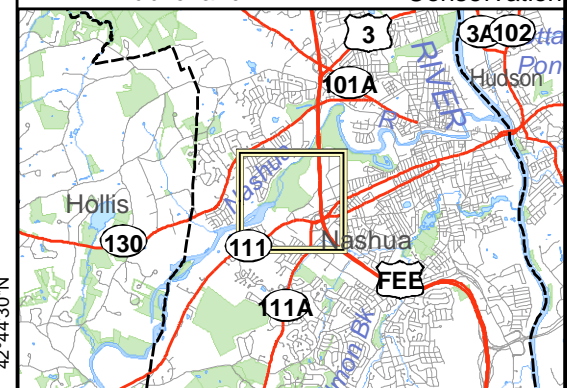
 Contour

 Building

*Source: USGS*

 Restricted Access

 Conservation



Base map data from NH GRANIT at Earth Systems Research Center (UNH) and Open Street Map contributors. UNH, NH Fish & Game and cooperating agencies make no claim as to the validity or reliability or to any implied uses of these data. Not intended for navigation. Map prepared: June 2023

**Directions:**