

For fishing regulation information, please refer to the NHFGD Freshwater Fishing Digest.

Contact: NHFGD Region 1 (North Country), Lancaster  
E-mail: [reg1@wildlife.nh.gov](mailto:reg1@wildlife.nh.gov) Phone: 603-788-3164

## CLARKSVILLE POND Clarksville

**FISHERY:** Coldwater **ACRES:** 22

**TROPHIC LEVEL:** OLIGO

**AVG. DEPTH:** 5 **MAX. DEPTH:** 16

**SPECIES:** EBT,BBH

**ADDITIONAL INFO:** Stocked; trout pond, fly-fishing only; no petro motors

**ACCESS:** cartop

Please contact NH Dept of Safety, Marine Patrol for info. on water body/boat/motor restrictions:  
(603) 293-2037 [www.nh.gov/safety](http://www.nh.gov/safety)

### Access site to Public Waters



Cartop

*Water access data: NH Office of Planning and Development*



Shorebank



Ramp

Bathymetry depth in feet, if available

Bathymetry data provided by the NH Dept. of Environmental Services, Watershed Mgt Bureau

Town boundary

Primary Route

Road or Street

Trail or other

Stream or Shoreline

Surface Water

Wetland

Conservation or Public land

Cleared

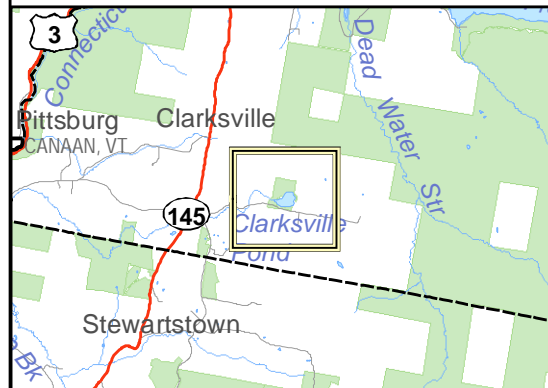
Forest

Contour

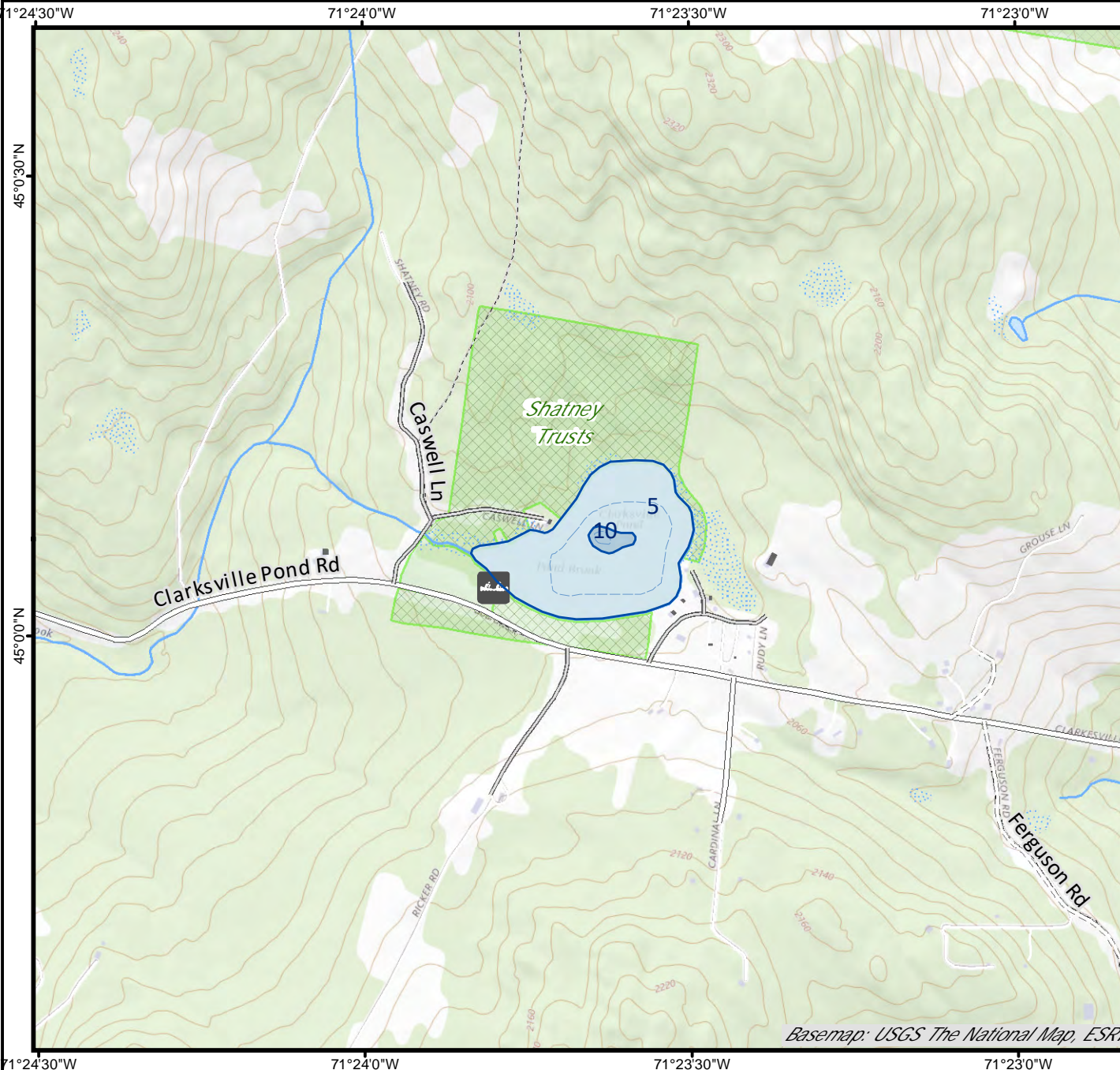
Building

*Source: USGS*

Restricted Access Conservation



**Directions:** Rt 145 to Clarksville Pond Rd



Base map data from NH GRANIT at Earth Systems Research Center (UNH) and Open Street Map contributors. UNH, NH Fish & Game and cooperating agencies make no claim as to the validity or reliability or to any implied uses of these data. Not intended for navigation. Map prepared: June 2023