

For fishing regulation information, please refer to the NHFGD Freshwater Fishing Digest.

Contact: NHFGD Region 2 (Lakes Region), New Hampton
E-mail: reg2@wildlife.nh.gov Phone: 603-744-5470

DAN HOLE POND Ossipee/Tuftonboro

FISHERY: Coldwater **ACRES:** 443

TROPHIC LEVEL: OLIGO

AVG. DEPTH: 57 **MAX. DEPTH:** 130

SPECIES: EBT,LLS,LT,ECP,BBH

ADDITIONAL INFO: Stocked; lake trout and/or salmon lake; boat/motor res.

ACCESS: ramp at campground

Please contact NH Dept of Safety, Marine Patrol for info. on water body/boat/motor restrictions:
(603) 293-2037 www.nh.gov/safety

Access site to Public Waters



Cartop

Water access data: NH Office of Planning and Development



Shorebank



Ramp

~ Bathymetry depth in feet, if available

Bathymetry data provided by the NH Dept. of Environmental Services, Watershed Mgt Bureau

— Town boundary

— Primary Route

— Road or Street

... Trail or other

~ Stream or Shoreline

Surface Water

Wetland

Conservation or Public land

Cleared

Forest

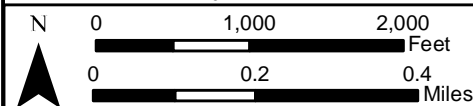
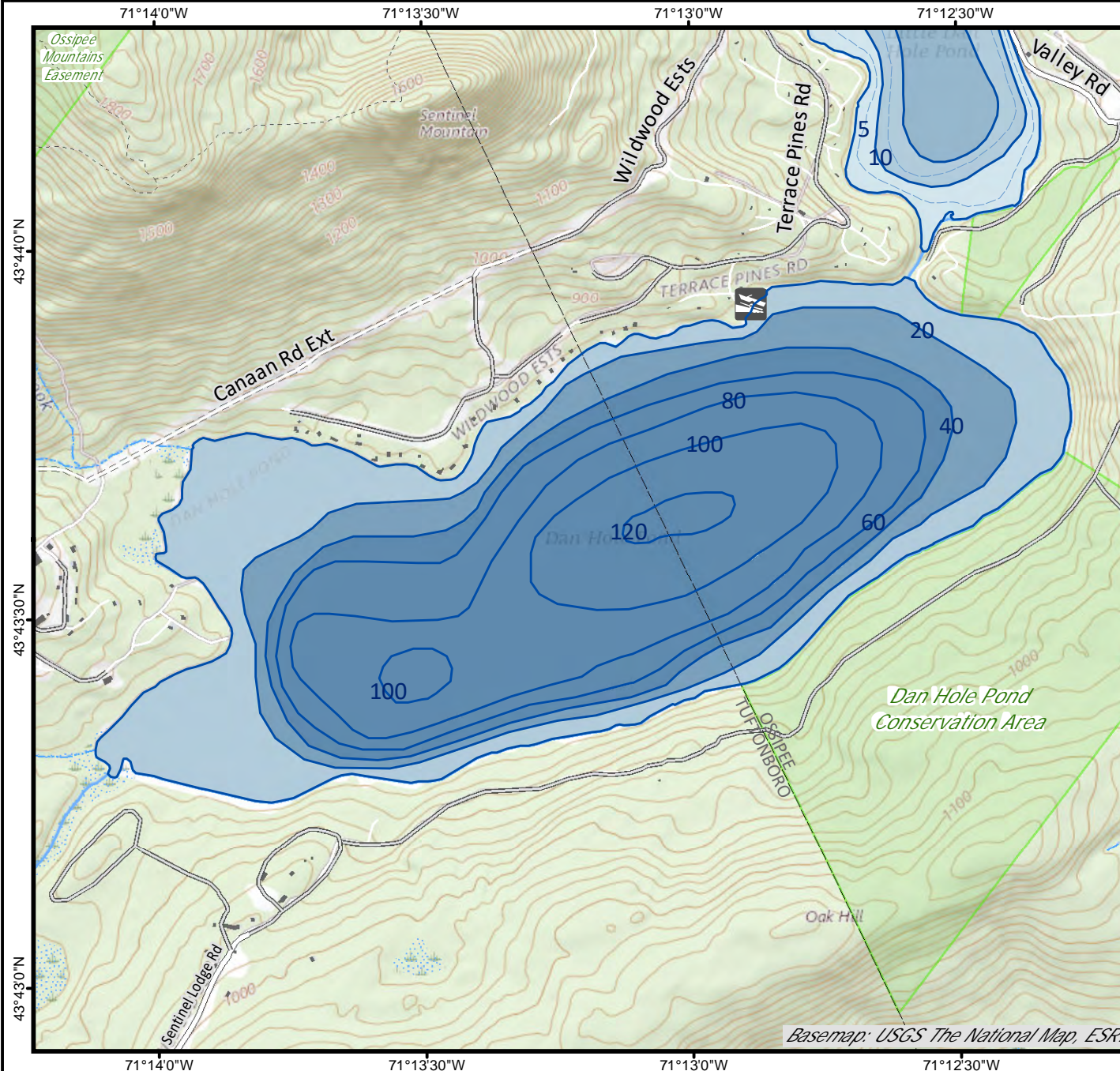
Contour

Building

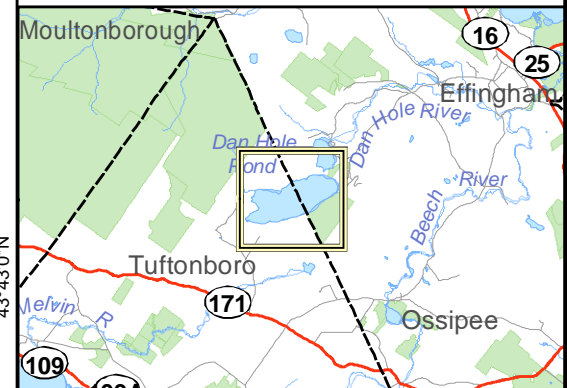
Source: USGS

Restricted Access

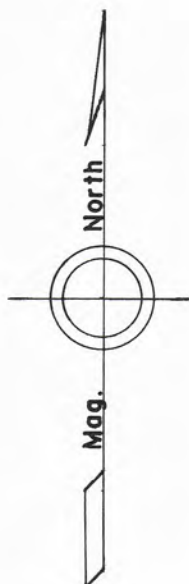
Conservation



Base map data from NH GRANIT at Earth Systems Research Center (UNH) and Open Street Map contributors. UNH, NH Fish & Game and cooperating agencies make no claim as to the validity or reliability or to any implied uses of these data. Not intended for navigation. Map prepared: June 2023



Directions:

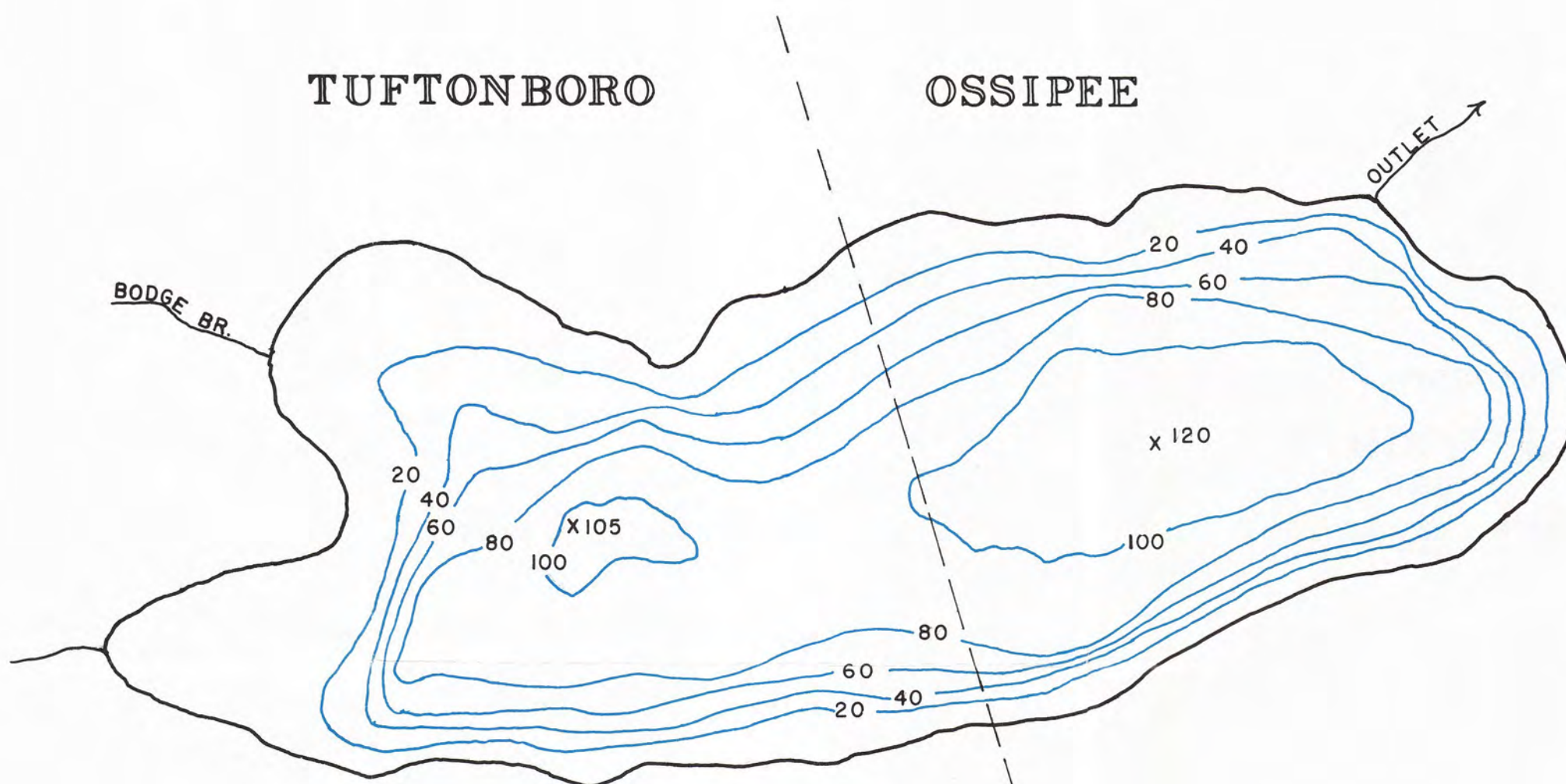


DANHOLE POND

DEPTH CONTOUR CHART

PREPARED AND PUBLISHED BY
THE NEW HAMPSHIRE FISH & GAME DEPARTMENT

FIELD DATA COLLECTED AS A SEGMENT OF
DINGELL - JOHNSON FEDERAL AID PROJECT F 10 R
DECEMBER 1967



LEGEND

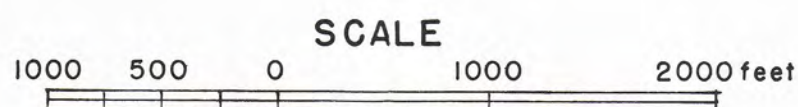
X = INTERMEDIATE DEPTHS

NOTE:-

THIS CHART IS NOT INTENDED AS
A NAVIGATION MAP.

ALL SOUNDINGS COMPUTED AT NORMAL FULL
POOL BY AN ELECTRONIC RECORDING
SOUNDER.

CONTOUR LINES ARE APPROXIMATE AND
SOUNDINGS ARE ACCURATE ONLY WITHIN
THE LIMITS OF THE FIELD METHODS USED.



Contour interval 20 ft.