

For fishing regulation information, please refer to the NHFGD Freshwater Fishing Digest.

Contact: NHFGD Region 2 (Lakes Region), New Hampton
E-mail: reg2@wildlife.nh.gov Phone: 603-744-5470

MILTON POND

FISHERY: Cold/Warm **ACRES:** 271

TROPHIC LEVEL: MESO

AVG. DEPTH: 18 **MAX. DEPTH:** 52

SPECIES:
RT,BT,SMB,LMB,ECP,BBH,WP,BC

ADDITIONAL INFO: Stocked

ACCESS: Milton Town Beach; or gravel ramp Townhouse Pond

Please contact NH Dept of Safety, Marine Patrol for info. on water body/boat/motor restrictions:
(603) 293-2037 www.nh.gov/safety


Access site to Public Waters

 Cartop


Water access data: NH Office of Planning and Development

 Shorebank


 Ramp


 Bathymetry depth in feet, if available


Bathymetry data provided by the NH Dept. of Environmental Services, Watershed Mgt Bureau


 Town boundary

 Primary Route


 Road or Street

 Trail or other

 Stream or Shoreline

 Surface Water

 Wetland

 Conservation or Public land

 Cleared


 Forest

 Contour

 Building

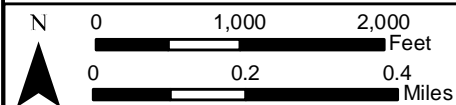
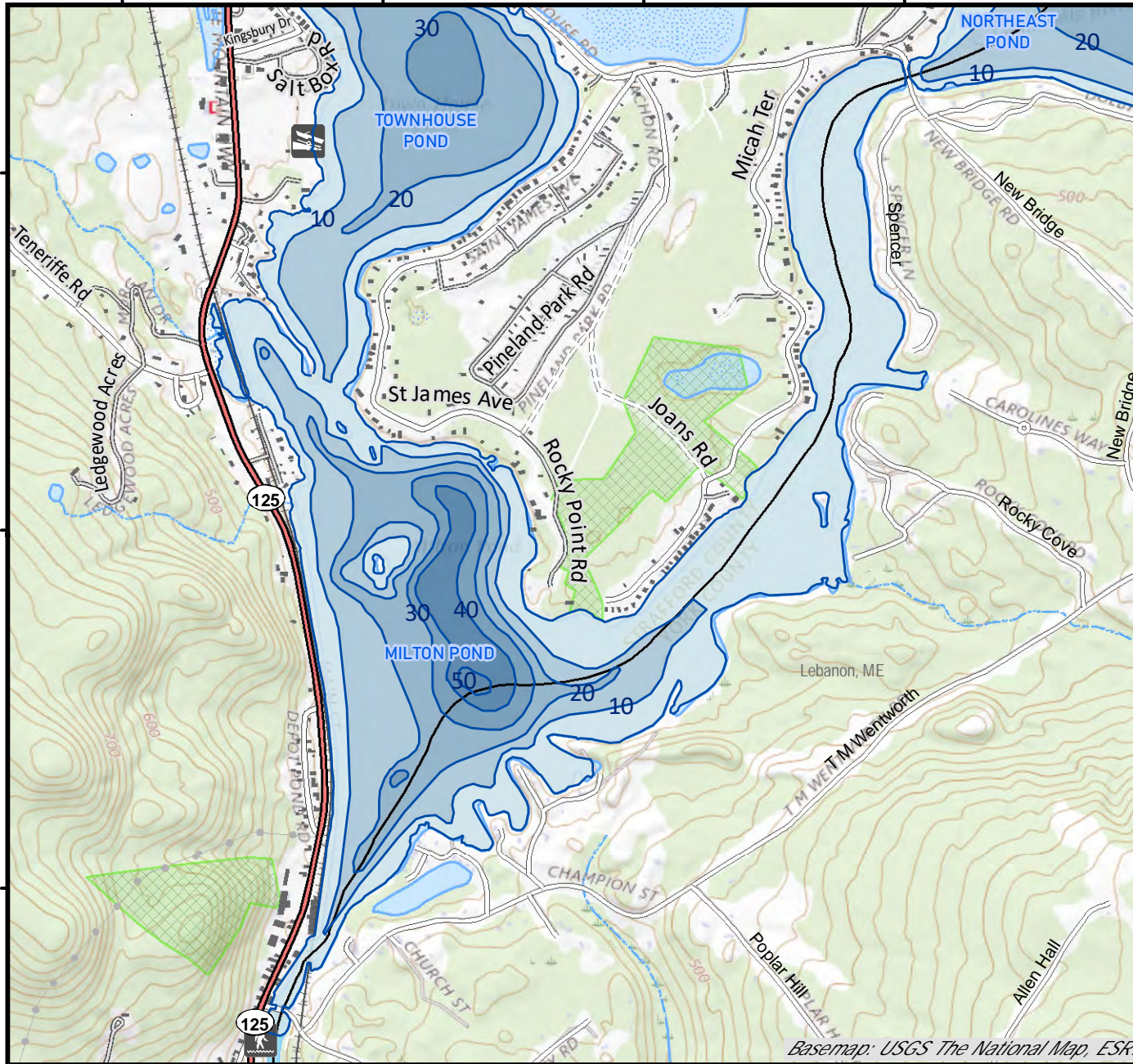
Source: USGS

 Restricted Access

 Conservation



Directions: Rt 125



Base map data from NH GRANIT at Earth Systems Research Center (UNH) and Open Street Map contributors. UNH, NH Fish & Game and cooperating agencies make no claim as to the validity or reliability or to any implied uses of these data. Not intended for navigation. Map prepared: June 2023