

For fishing regulation information, please refer to the NHFGD Freshwater Fishing Digest.

Contact: NHFGD Region 1 (North Country), Lancaster  
E-mail: [reg1@wildlife.nh.gov](mailto:reg1@wildlife.nh.gov) Phone: 603-788-3164

## PONTOOK RESERVOIR Dummer

**FISHERY:** Cold/Warm **ACRES:** 379

**TROPHIC LEVEL:** EUTRO

**AVG. DEPTH:** 4 **MAX. DEPTH:** 15

**SPECIES:**  
EBT,RT,LLS,SMB,LMB,ECP,BBH

ADDITIONAL INFO:

ACCESS: ramp or shorebank, Pontook  
Recreational Facility

Please contact NH Dept of Safety, Marine Patrol  
for info. on water body/boat/motor restrictions:  
(603) 293-2037 [www.nh.gov/safety](http://www.nh.gov/safety)

Access site to Public Waters



Cartop

Water access data: NH Office  
of Planning and Development



Shorebank



Ramp

~ Bathymetry depth in feet, if available

Bathymetry data provided by the NH Dept. of  
Environmental Services, Watershed Mgt Bureau

— Town boundary

— Primary Route

— Road or Street

--- Trail or other

~ Stream or Shoreline

Surface Water

Wetland

Conservation or  
Public land

Cleared

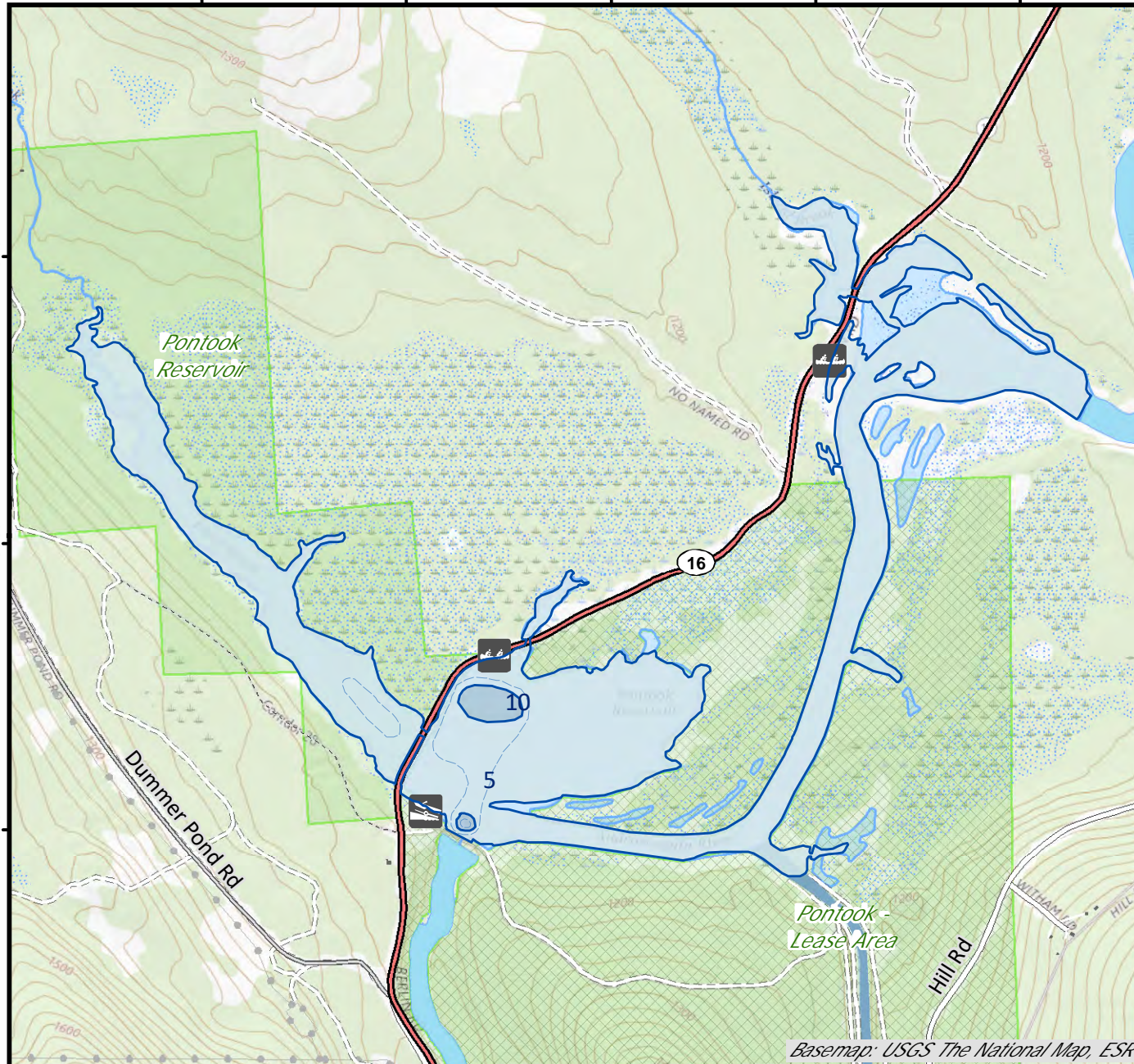
Forest

Contour

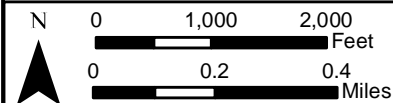
Building

Source: USGS

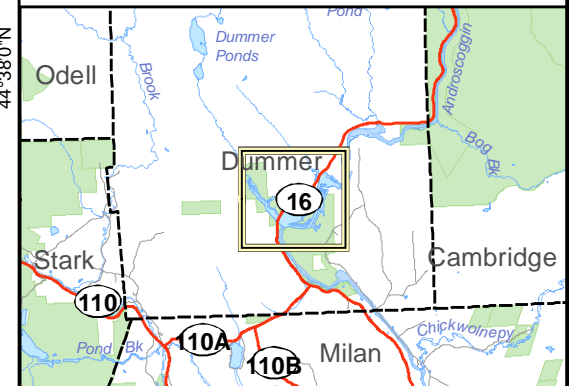
Restricted  
Access  
Conservation



Basemap: USGS The National Map, ESRI



Base map data from NH GRANIT at Earth Systems Research Center (UNH) and Open Street Map contributors. UNH, NH Fish & Game and cooperating agencies make no claim as to the validity or reliability or to any implied uses of these data. Not intended for navigation. Map prepared: June 2023



Directions: Rt 16