

For fishing regulation information, please refer to the NHFGD Freshwater Fishing Digest.

Contact: NHFGD Region 4 (Southwest NH), Keene
E-mail: reg4@wildlife.nh.gov Phone: 603-352-9669

POWDER MILL POND Hancock, Greenfield,

FISHERY: Warmwater **ACRES:** 419

TROPHIC LEVEL: EUTRO

AVG. DEPTH: 3 **MAX. DEPTH:** 17

SPECIES: SMB,LMB,ECP,BBH,BC,
BG,YP

ADDITIONAL INFO:

ACCESS: concrete boat ramp

Please contact NH Dept of Safety, Marine Patrol for info. on water body/boat/motor restrictions:
(603) 293-2037 www.nh.gov/safety

Access site to Public Waters



Canoe/cartop

Access data: NH Office
of Strategic Initiatives



Shorebank



Ramp

Bathymetry depth in feet, if available
Bathymetry provided by the NH Dept of
Environmental Services, Watershed Mgmt Bureau

Town boundary

Primary Route

Road or Street

Trail or other

Stream or Shoreline

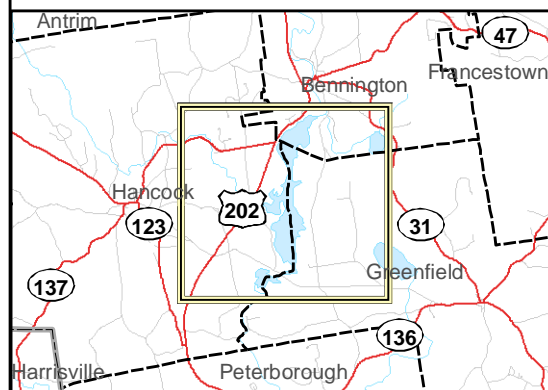
Surface Water

Wetland

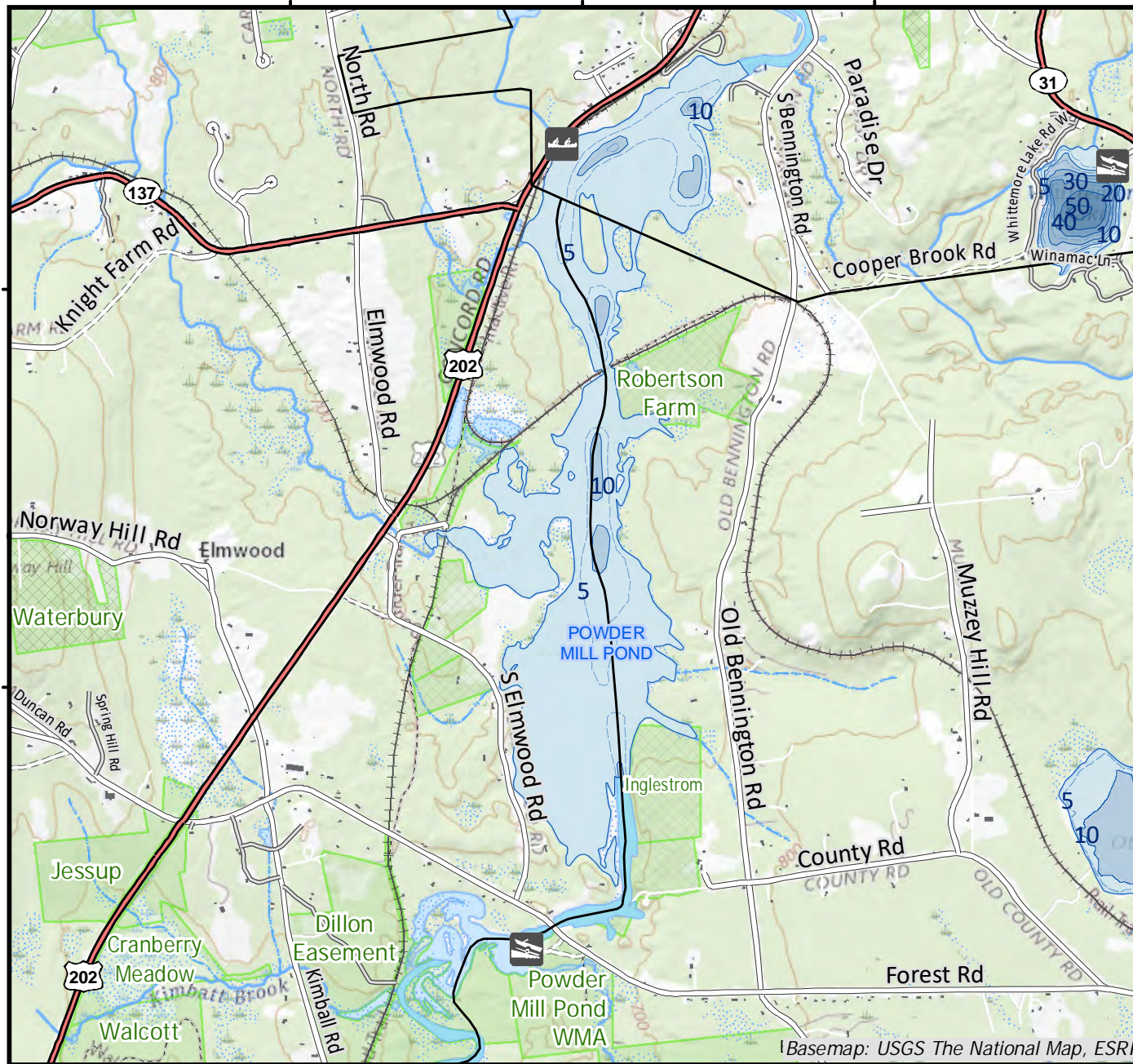
Conservation or
Public land

Cleared
Forest
 Contour
 Building
 Restricted
Access
Conservation

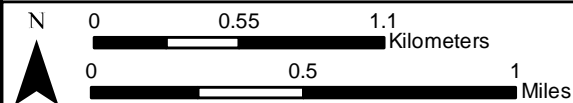
Source: USGS



Directions: Forest Road



Basemap: USGS The National Map, ESRI



Base map data from NH GRANIT at Earth Systems Research Center (UNH) and Open Street Map contributors. UNH, NH Fish & Game and cooperating agencies make no claim as to the validity or reliability or to any implied uses of these data. Not intended for navigation. Map prepared: June 2023