

For fishing regulation information, please refer to the NHFGD Freshwater Fishing Digest.

Contact: NHFGD Inland Fisheries Division, Concord
E-mail: fish@wildlife.nh.gov Phone: 603-271-2501

EXETER RESERVOIR

Exeter

FISHERY: Coldwater **ACRES:** 20

TROPHIC LEVEL: EUTRO

AVG. DEPTH: 7 **MAX. DEPTH:** 10

SPECIES: EBT,RT

ADDITIONAL INFO: Stocked; trout pond

ACCESS: (Water Works Pond), shorebank

Please contact NH Dept of Safety, Marine Patrol for info. on water body/boat/motor restrictions:
(603) 293-2037 www.nh.gov/safety

Access site to Public Waters



Cartop

Water access data: NH Office of Planning and Development



Shorebank



Ramp

~ Bathymetry depth in feet, if available

Bathymetry data provided by the NH Dept. of Environmental Services, Watershed Mgt Bureau

— Town boundary

— Primary Route

— Road or Street

— Trail or other

— Stream or Shoreline

— Surface Water

— Wetland

— Conservation or Public land

— Cleared

— Forest

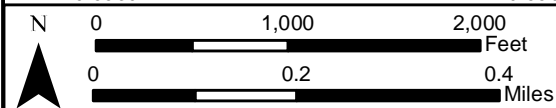
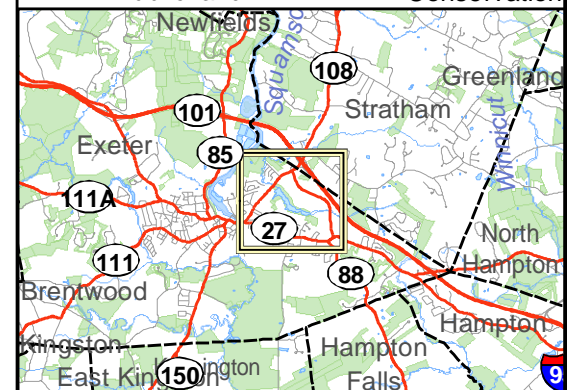
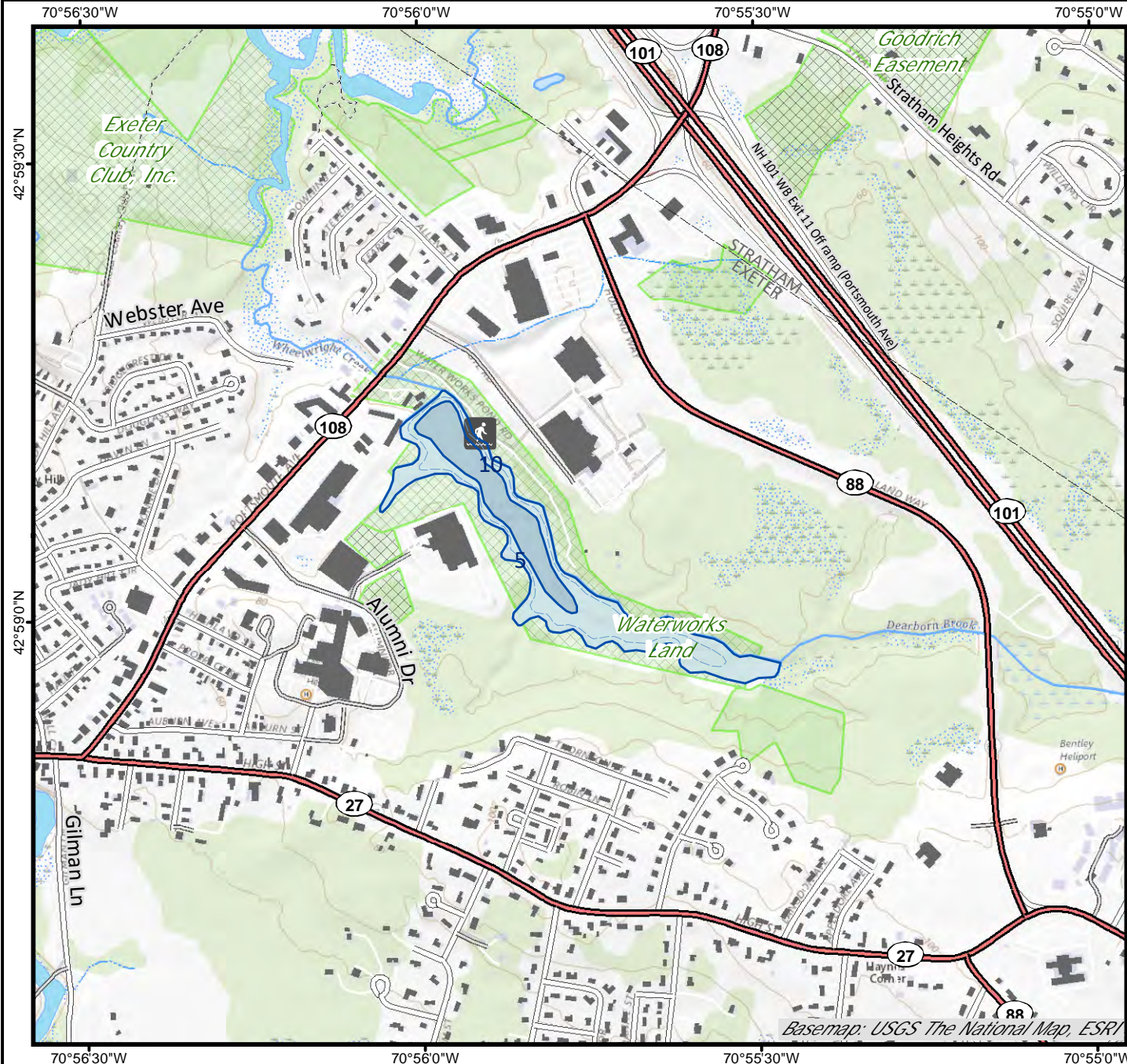
— Contour

— Building

Source: USGS

— Restricted Access

— Conservation



Base map data from NH GRANIT at Earth Systems Research Center (UNH) and Open Street Map contributors. UNH, NH Fish & Game and cooperating agencies make no claim as to the validity or reliability or to any implied uses of these data. Not intended for navigation. Map prepared: June 2023

Directions: Portsmouth Ave