

For fishing regulation information, please refer to the NHFGD Freshwater Fishing Digest.

Contact: NHFGD Region 2 (Lakes Region), New Hampton
E-mail: reg2@wildlife.nh.gov Phone: 603-744-5470

TROUT POND (Stacy)
Freedom

FISHERY:	ACRES:	21
TROPIC LEVEL: MESO		
AVG. DEPTH:	9	MAX. DEPTH: 22
SPECIES: EBT		

ADDITIONAL INFO: Stocked; trout pond

ACCESS: remote walk-in

Please contact NH Dept of Safety, Marine Patrol for info. on water body/boat/motor restrictions:
(603) 293-2037 www.nh.gov/safety

Access site to Public Waters

Cartop

Shorebank

Ramp

Water access data: NH Office of Planning and Development

Bathymetry depth in feet, if available
Bathymetry data provided by the NH Dept. of Environmental Services, Watershed Mgt Bureau

- Town boundary

Primary Route

Road or Street

Trail or other

Stream or Shoreline

Surface Water

Wetland

Conservation or Public land

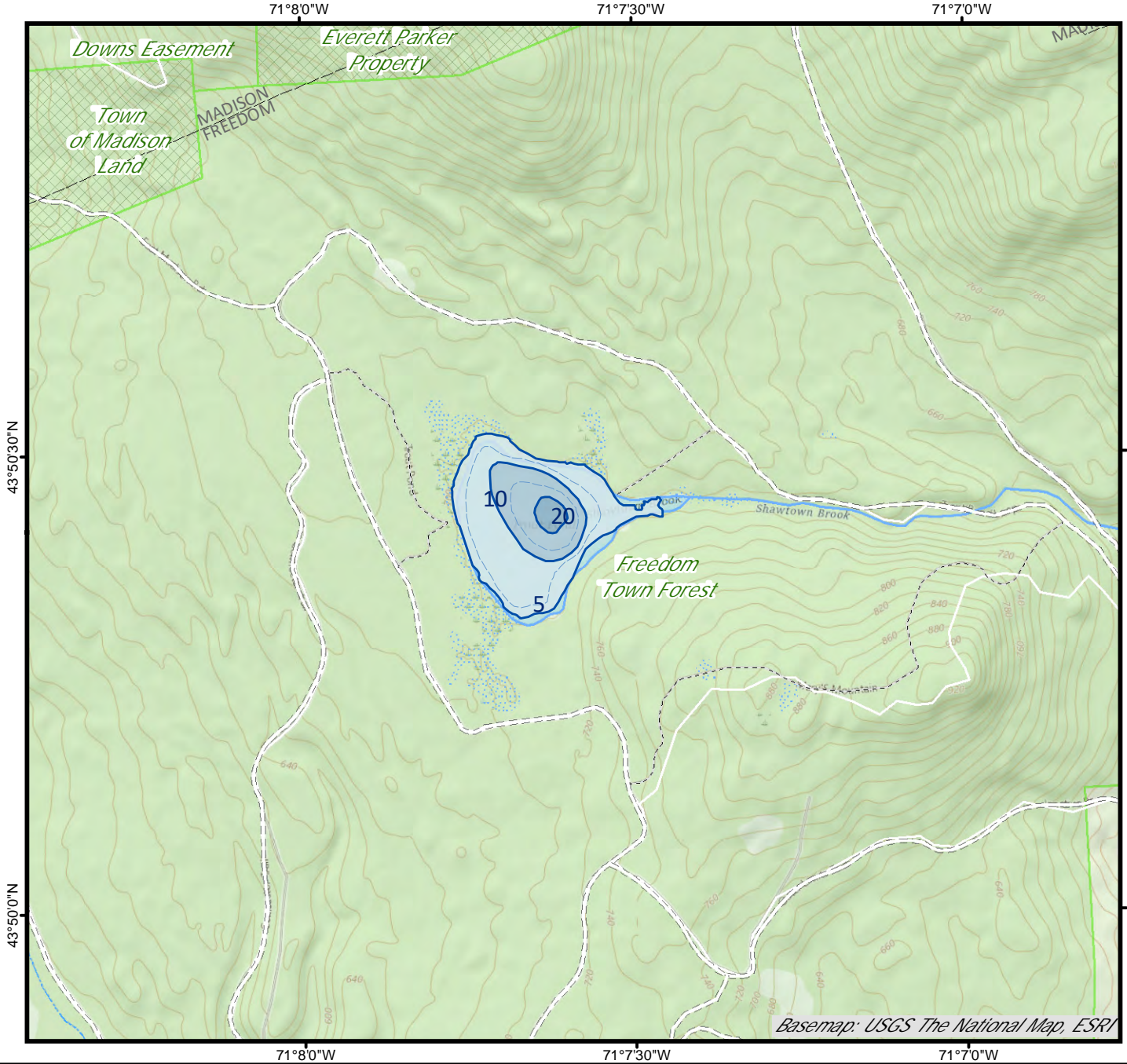
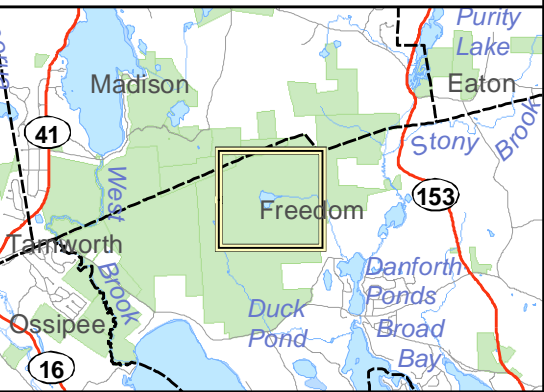
Cleared Forest

Contour

Building

Restricted Access Conservation

Source: USGS



N

0 1,000 2,000 Feet

0 0.2 0.4 Miles

Base map data from NH GRANIT at Earth Systems Research Center (UNH) and Open Street Map contributors. UNH, NH Fish & Game and cooperating agencies make no claim as to the validity or reliability or to any implied uses of these data. Not intended for navigation. Map prepared: June 2023

Directions: