

For fishing regulation information, please refer to the NHFGD Freshwater Fishing Digest.

Contact: NHFGD Region 2 (Lakes Region), New Hampton
E-mail: reg2@wildlife.nh.gov Phone: 603-744-5470

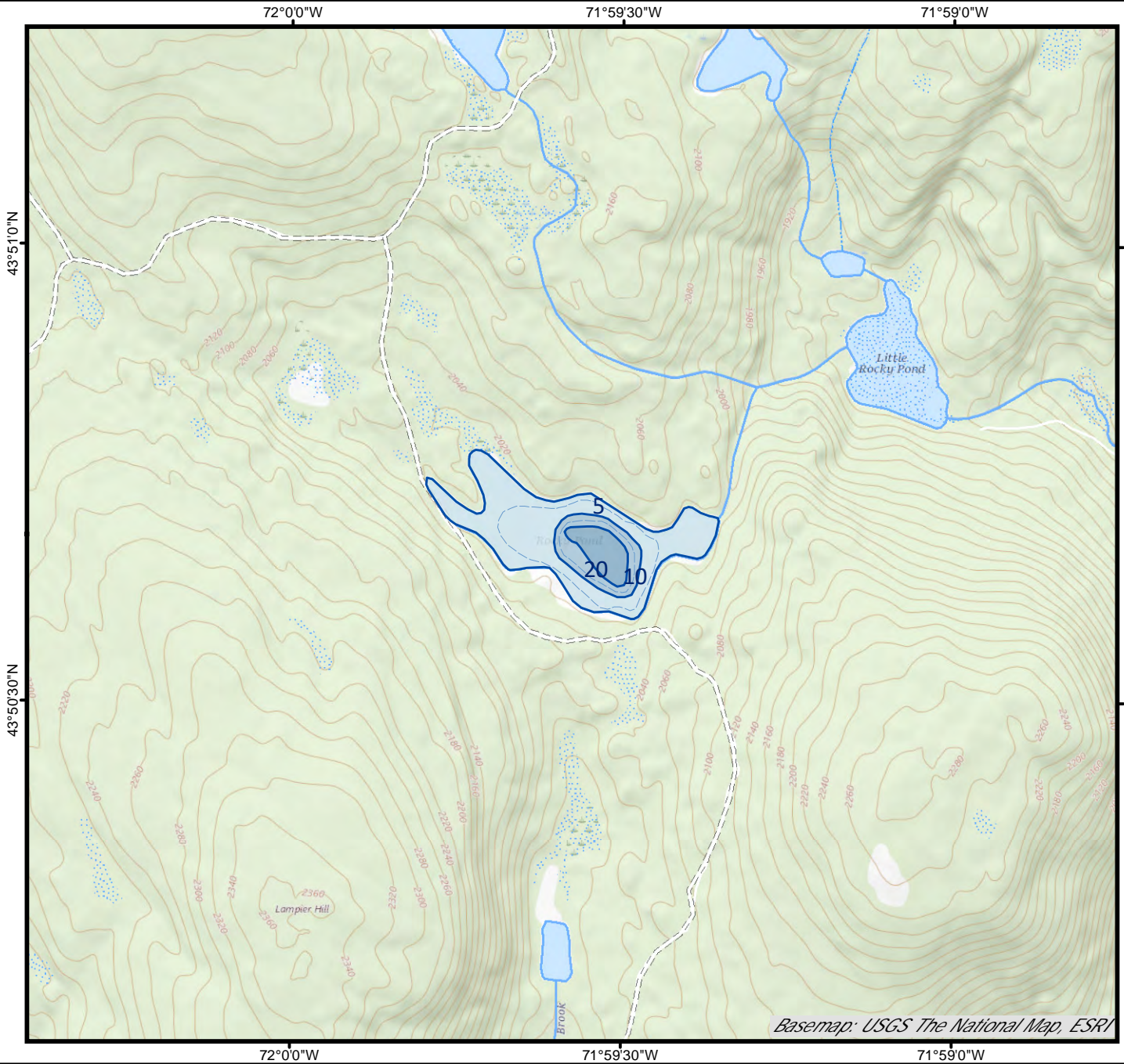
ROCKY POND
Wentworth

FISHERY: Coldwater	ACRES: 20
TROPHIC LEVEL: MESO	
AVG. DEPTH: 8	MAX. DEPTH: 24
SPECIES: EBT	

ADDITIONAL INFO: Stocked; trout pond

ACCESS: remote walk-in

Please contact NH Dept of Safety, Marine Patrol for info. on water body/boat/motor restrictions:
(603) 293-2037 www.nh.gov/safety



Access site to Public Waters

Cartop

Shorebank

Ramp

Bathymetry depth in feet, if available

Bathymetry data provided by the NH Dept. of Environmental Services, Watershed Mgt Bureau

Town boundary

Primary Route

Road or Street

Trail or other

Stream or Shoreline

Surface Water

Wetland

Conservation or Public land

Cleared

Forest

Contour

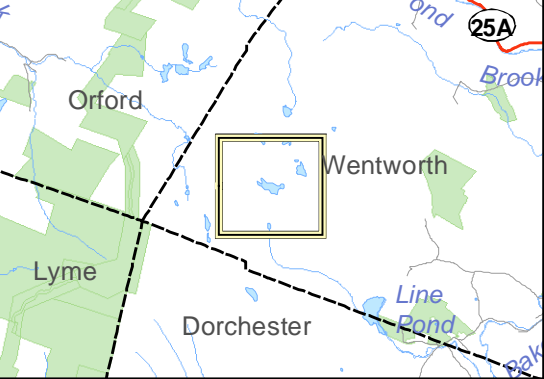
Building

Restricted Access Conservation

Source: USGS

0 1,000 2,000 Feet
0 0.2 0.4 Miles

Base map data from NH GRANIT at Earth Systems Research Center (UNH) and Open Street Map contributors. UNH, NH Fish & Game and cooperating agencies make no claim as to the validity or reliability or to any implied uses of these data. Not intended for navigation. Map prepared: June 2023



Directions: