

For fishing regulation information, please refer to the NHFGD Freshwater Fishing Digest.

Contact: NHFGD Inland Fisheries Division, Concord
E-mail: fish@wildlife.nh.gov Phone: 603-271-2501

WASH POND (Sunset Lake) Hampstead

FISHERY: Warmwater **ACRES:** 171

TROPHIC LEVEL: MESO

AVG. DEPTH: 13 **MAX. DEPTH:** 34

SPECIES: SMB,LMB,ECP,BBH,YP

ADDITIONAL INFO: Permit parking only

ACCESS: Wash Pond (Sunset Lake) Town Beach

Please contact NH Dept of Safety, Marine Patrol for info. on water body/boat/motor restrictions:
(603) 293-2037 www.nh.gov/safety

Access site to Public Waters



Cartop

Water access data: NH Office of Planning and Development



Shorebank



Ramp

Bathymetry depth in feet, if available

Bathymetry data provided by the NH Dept. of Environmental Services, Watershed Mgt Bureau

Town boundary

Primary Route

Road or Street

Trail or other

Stream or Shoreline

Surface Water

Wetland

Conservation or Public land

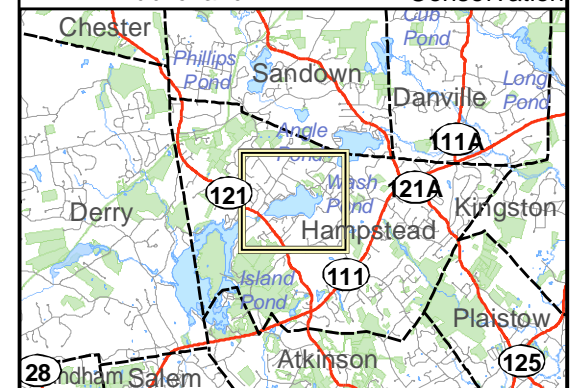
Cleared Forest

Contour

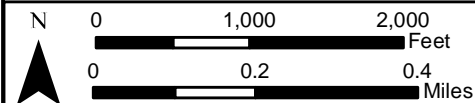
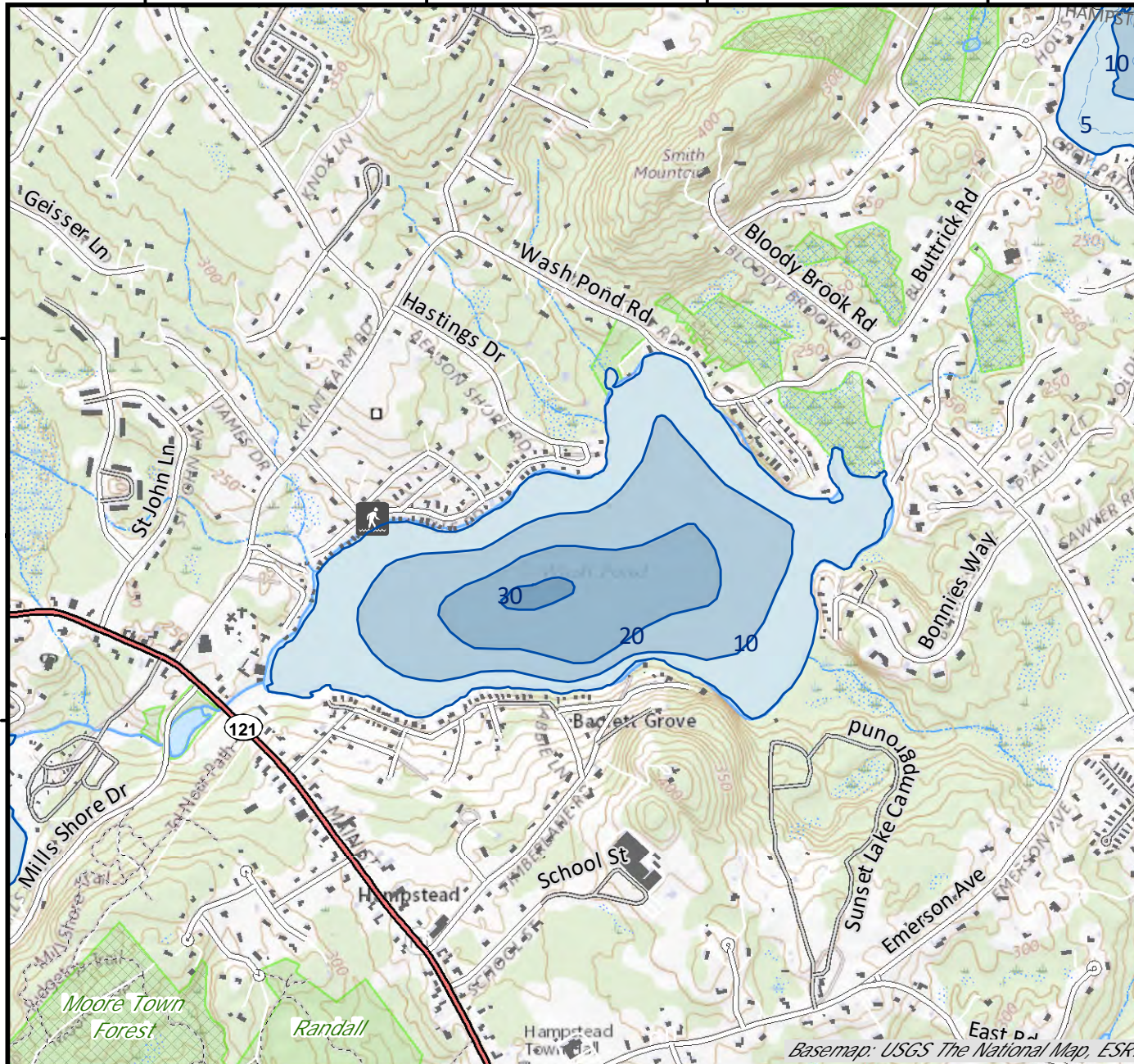
Building

Source: USGS

Restricted Access Conservation



Directions: Rt 121 to Kent Farm Rd



Base map data from NH GRANIT at Earth Systems Research Center (UNH) and Open Street Map contributors. UNH, NH Fish & Game and cooperating agencies make no claim as to the validity or reliability or to any implied uses of these data. Not intended for navigation. Map prepared: June 2023