

For fishing regulation information, please refer to the NHFGD Freshwater Fishing Digest.

Contact: NHFGD Region 1 (North Country), Lancaster  
E-mail: [reg1@wildlife.nh.gov](mailto:reg1@wildlife.nh.gov) Phone: 603-788-3164

## MOUNTAIN POND, LOWER Lyman

**FISHERY:** Coldwater **ACRES:** 6

**TROPHIC LEVEL:**

**AVG. DEPTH:** 3 **MAX. DEPTH:** 18

**SPECIES:** EBT

**ADDITIONAL INFO:** trout pond

**ACCESS:** remote walk-in

Please contact NH Dept of Safety, Marine Patrol for info. on water body/boat/motor restrictions:  
(603) 293-2037 [www.nh.gov/safety](http://www.nh.gov/safety)

### Access site to Public Waters



Cartop

*Water access data: NH Office of Planning and Development*



Shorebank



Ramp



Bathymetry depth in feet, if available

Bathymetry data provided by the NH Dept. of Environmental Services, Watershed Mgt Bureau

— Town boundary

— Primary Route

— Road or Street

— Trail or other

— Stream or Shoreline

— Surface Water

— Wetland

— Conservation or Public land

— Cleared

— Forest

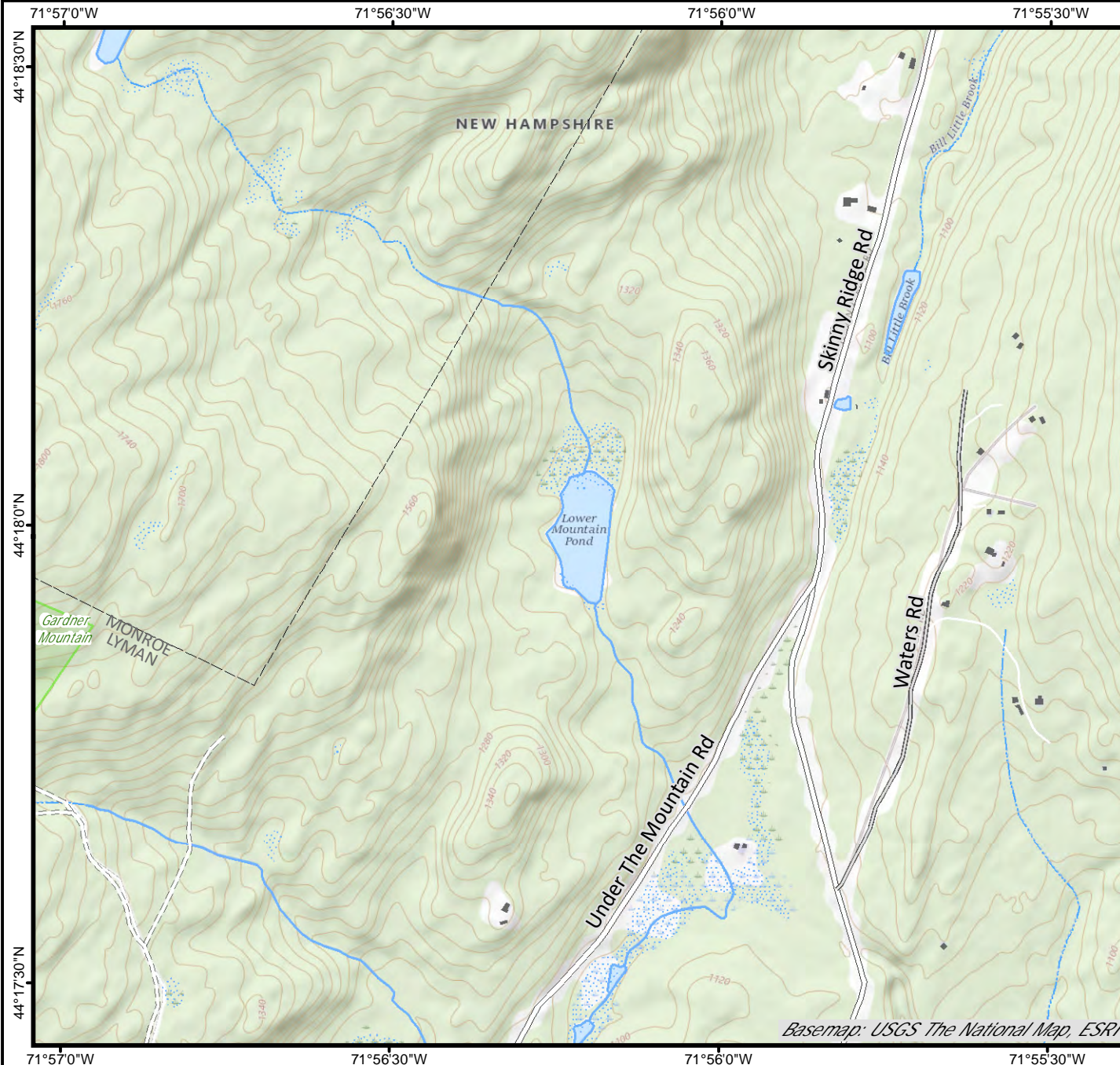
— Contour

— Building

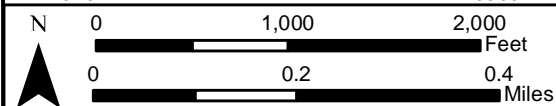
Source: USGS

— Restricted Access

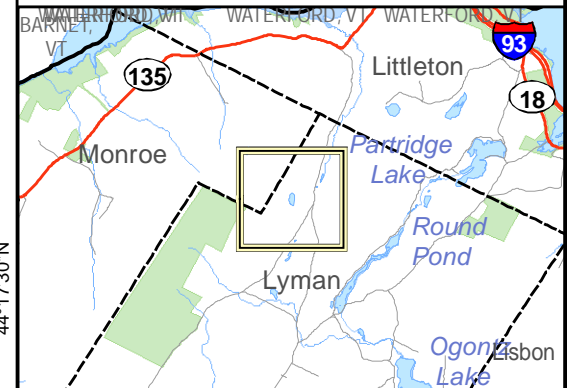
— Conservation



Basemap: USGS The National Map, ESRI



Base map data from NH GRANIT at Earth Systems Research Center (UNH) and Open Street Map contributors. UNH, NH Fish & Game and cooperating agencies make no claim as to the validity or reliability or to any implied uses of these data. Not intended for navigation. Map prepared: June 2023



Directions: