

For fishing regulation information, please refer to the NHFGD Freshwater Fishing Digest.

Contact: NHFGD Region 2 (Lakes Region), New Hampton
E-mail: reg2@wildlife.nh.gov Phone: 603-744-5470

GARLAND POND Ossipee

FISHERY: **ACRES:** 35

TROPIC LEVEL: EUTRO

AVG. DEPTH: 4 **MAX. DEPTH:** 10

SPECIES:

ADDITIONAL INFO: electric motors only
5HP limit

ACCESS: cartop

Please contact NH Dept of Safety, Marine Patrol
for info. on water body/boat/motor restrictions:
(603) 293-2037 www.nh.gov/safety

Access site to Public Waters



Cartop

Water access data: NH Office
of Planning and Development



Shorebank



Ramp



Bathymetry depth in feet, if available

Bathymetry data provided by the NH Dept. of
Environmental Services, Watershed Mgt Bureau

— Town boundary

— Primary Route

— Road or Street

--- Trail or other

~ Stream or Shoreline

Surface Water

Wetland

Conservation or
Public land

Cleared

Forest

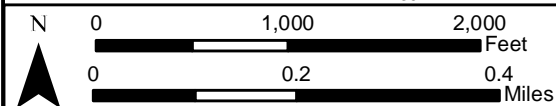
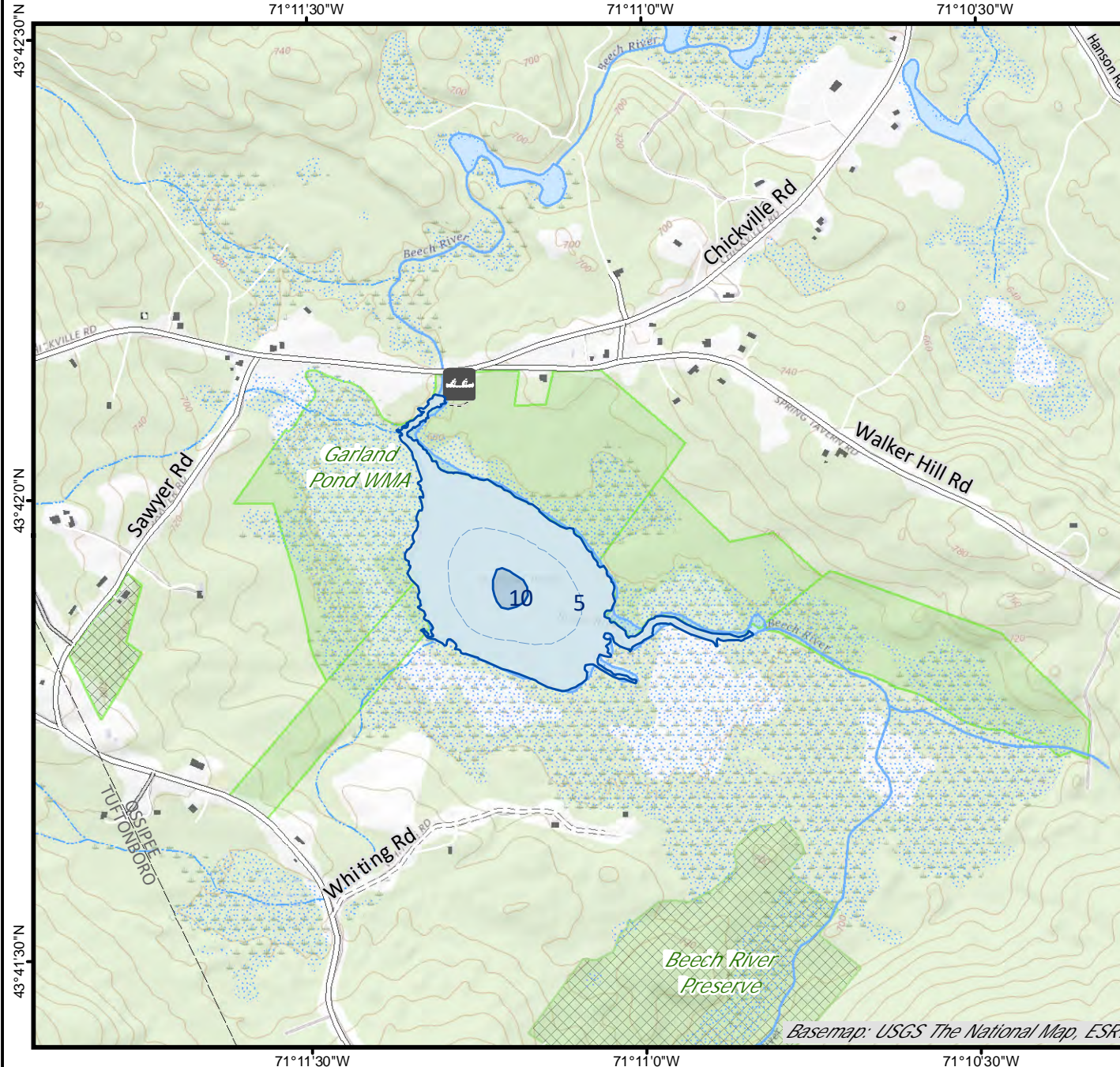
Contour

Building

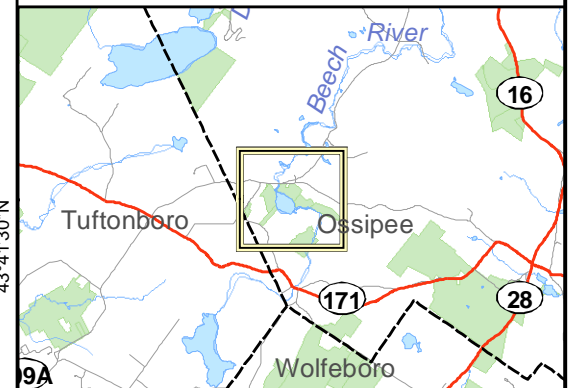
Source: USGS

Restricted
Access

Conservation



Base map data from NH GRANIT at Earth Systems Research Center (UNH) and Open Street Map contributors. UNH, NH Fish & Game and cooperating agencies make no claim as to the validity or reliability or to any implied uses of these data. Not intended for navigation. Map prepared: June 2023



Directions: Rt 171 to Durgin Rd, 2.2 mi on
R