

For fishing regulation information, please refer to the NHFGD Freshwater Fishing Digest.

Contact: NHFGD Region 1 (North Country), Lancaster  
E-mail: [reg1@wildlife.nh.gov](mailto:reg1@wildlife.nh.gov) Phone: 603-788-3164

## JERICO LAKE Berlin

**FISHERY:** Warmwater **ACRES:** 127

**TROPHIC LEVEL:** MESO

**AVG. DEPTH:** 5 **MAX. DEPTH:** 15

**SPECIES:** SMB,LMB,BBH,NP,BC

ADDITIONAL INFO: fishing restrictions;  
electric motors only 3HP limit

ACCESS: Jericho Lake Park

Please contact NH Dept of Safety, Marine Patrol  
for info. on water body/boat/motor restrictions:  
(603) 293-2037 [www.nh.gov/safety](http://www.nh.gov/safety)

### Access site to Public Waters



Cartop

*Water access data: NH Office  
of Planning and Development*



Shorebank



Ramp

Bathymetry depth in feet, if available

Bathymetry data provided by the NH Dept. of  
Environmental Services, Watershed Mgt Bureau

Town boundary

Primary Route

Road or Street

Trail or other

Stream or Shoreline

Surface Water

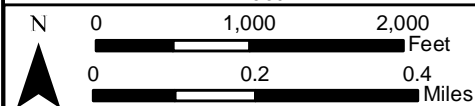
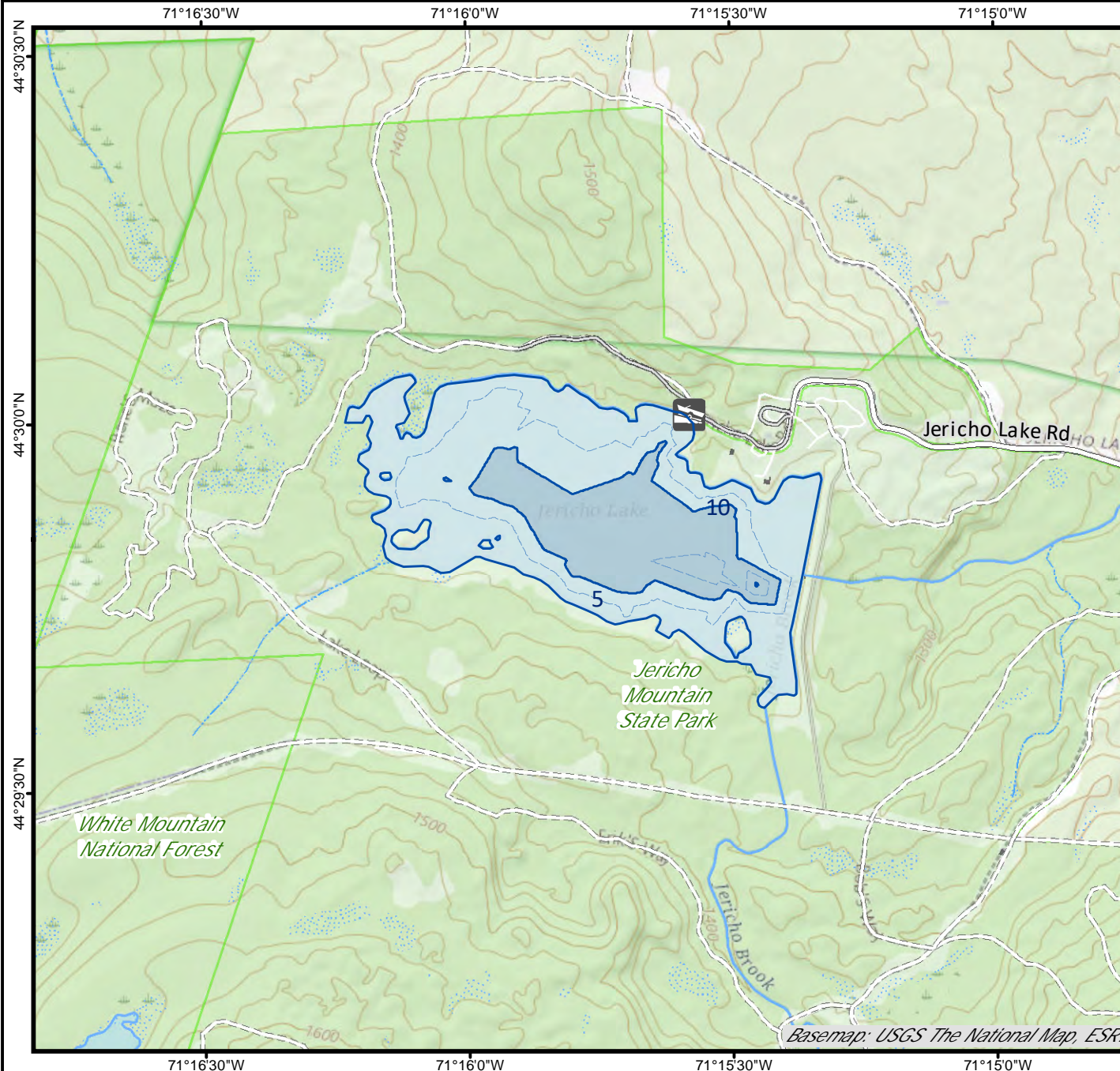
Wetland

Conservation or  
Public land

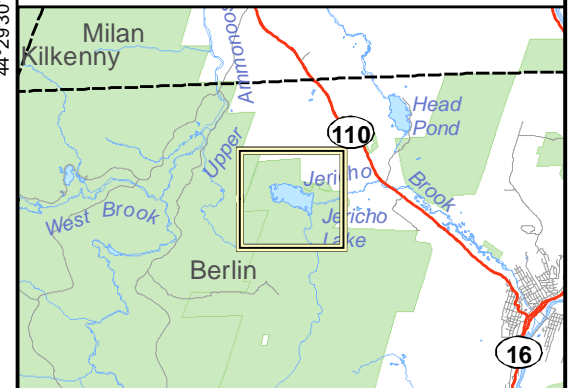
Cleared  
Forest  
 Contour  
 Building

Source: USGS

Restricted  
Access  
Conservation



Base map data from NH GRANIT at Earth Systems Research Center (UNH) and  
Open Street Map contributors. UNH, NH Fish & Game and cooperating agencies  
make no claim as to the validity or reliability or to any implied uses of these data.  
Not intended for navigation. Map prepared: June 2023



Directions: Off Rt 110