

For fishing regulation information, please refer to the NHFGD Freshwater Fishing Digest.

Contact: NHFGD Region 4 (Southwest NH), Keene
E-mail: reg4@wildlife.nh.gov Phone: 603-352-9669

WEARE RESERVOIR (Horace L.) Weare

FISHERY: Cold/Warm **ACRES:** 268

TROPHIC LEVEL: MESO

AVG. DEPTH: 14 **MAX. DEPTH:** 32

SPECIES: BT,SMB,LMB,ECP,
BBH,BC,BG,YP

ADDITIONAL INFO: Stocked

ACCESS: Chase Park Boat Ramp


Please contact NH Dept of Safety, Marine Patrol for info. on water body/boat/motor restrictions:
(603) 293-2037 www.nh.gov/safety

Access site to Public Waters

 Cartop *Water access data: NH Office of Planning and Development*

 Shorebank


 Ramp


 Bathymetry depth in feet, if available


Bathymetry data provided by the NH Dept. of Environmental Services, Watershed Mgt Bureau


 Town boundary

 Primary Route

 Road or Street

 Trail or other

 Stream or Shoreline

 Surface Water

 Wetland

 Conservation or Public land

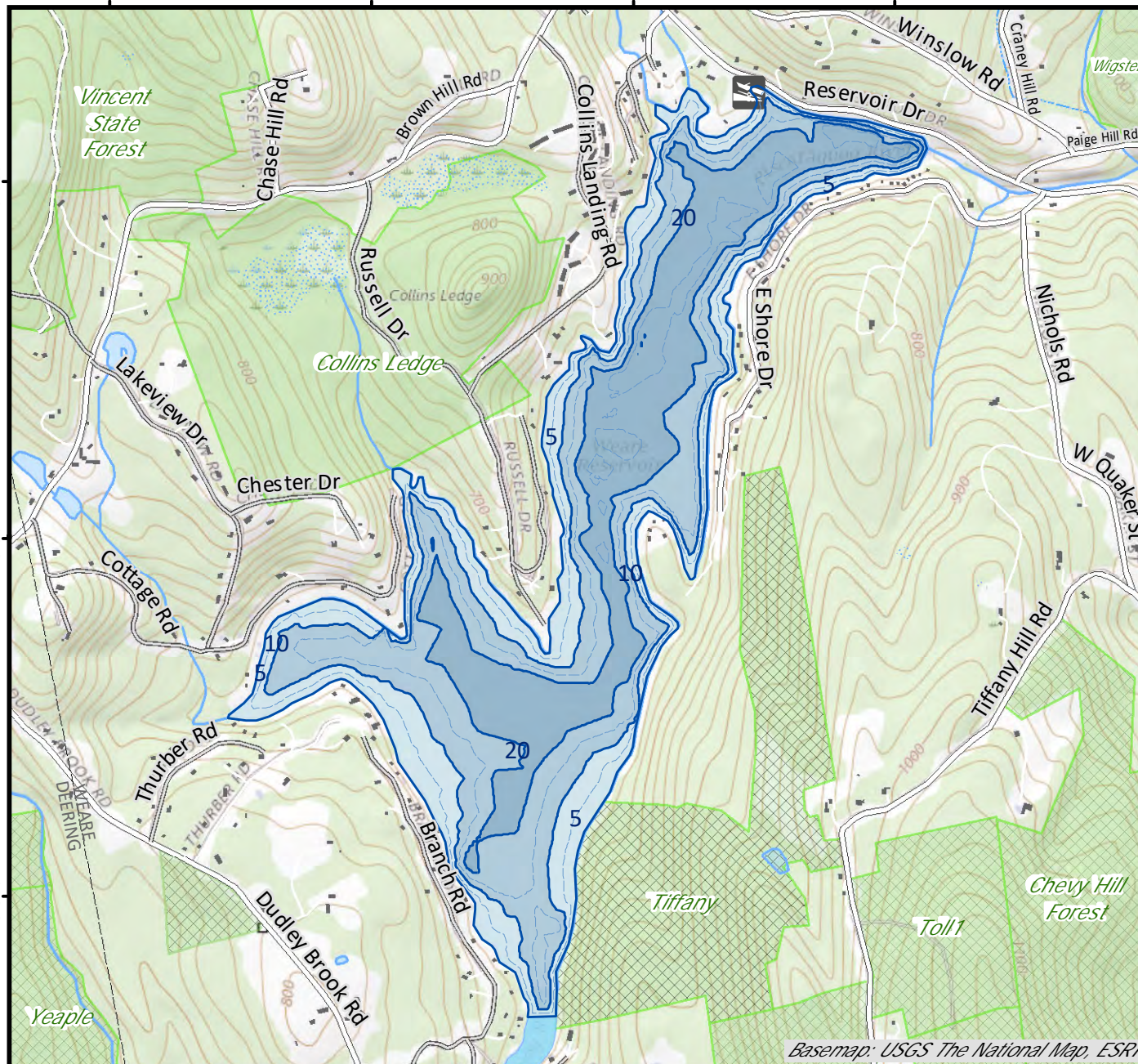
 Cleared Forest

 Contour

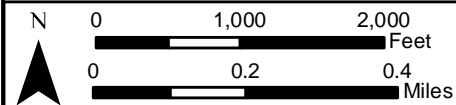
 Building

Source: USGS

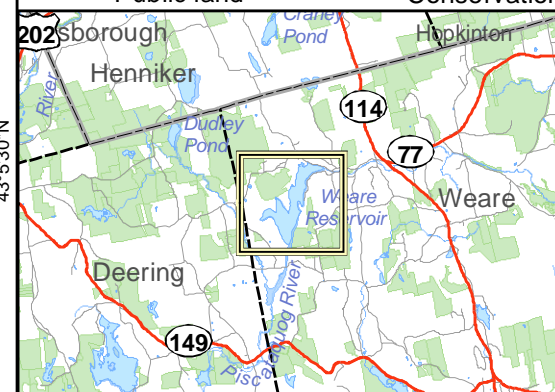
 Restricted Access Conservation



Basemap: USGS The National Map, ESRI



Base map data from NH GRANIT at Earth Systems Research Center (UNH) and Open Street Map contributors. UNH, NH Fish & Game and cooperating agencies make no claim as to the validity or reliability or to any implied uses of these data. Not intended for navigation. Map prepared: June 2023



Directions: Rt 114 to Page Hill Rd to Reservoir Dr