

For fishing regulation information, please refer to the NHFGD Freshwater Fishing Digest.

Contact: NHFGD Region 2 (Lakes Region), New Hampton
E-mail: reg2@wildlife.nh.gov Phone: 603-744-5470

PEAKED HILL POND Thornton

FISHERY: Coldwater **ACRES:** 15

TROPHIC LEVEL: MESO

AVG. DEPTH: 5 **MAX. DEPTH:** 16

SPECIES: EBT

ADDITIONAL INFO: Stocked; trout pond;
no motors

ACCESS: remote walk-in

Please contact NH Dept of Safety, Marine Patrol
for info. on water body/boat/motor restrictions:
(603) 293-2037 www.nh.gov/safety

Access site to Public Waters



Cartop

*Water access data: NH Office
of Planning and Development*



Shorebank



Ramp

Bathymetry depth in feet, if available

Bathymetry data provided by the NH Dept. of
Environmental Services, Watershed Mgt Bureau

Town boundary

Primary Route

Road or Street

Trail or other

Stream or Shoreline

Surface Water

Wetland

Conservation or
Public land

Cleared

Forest

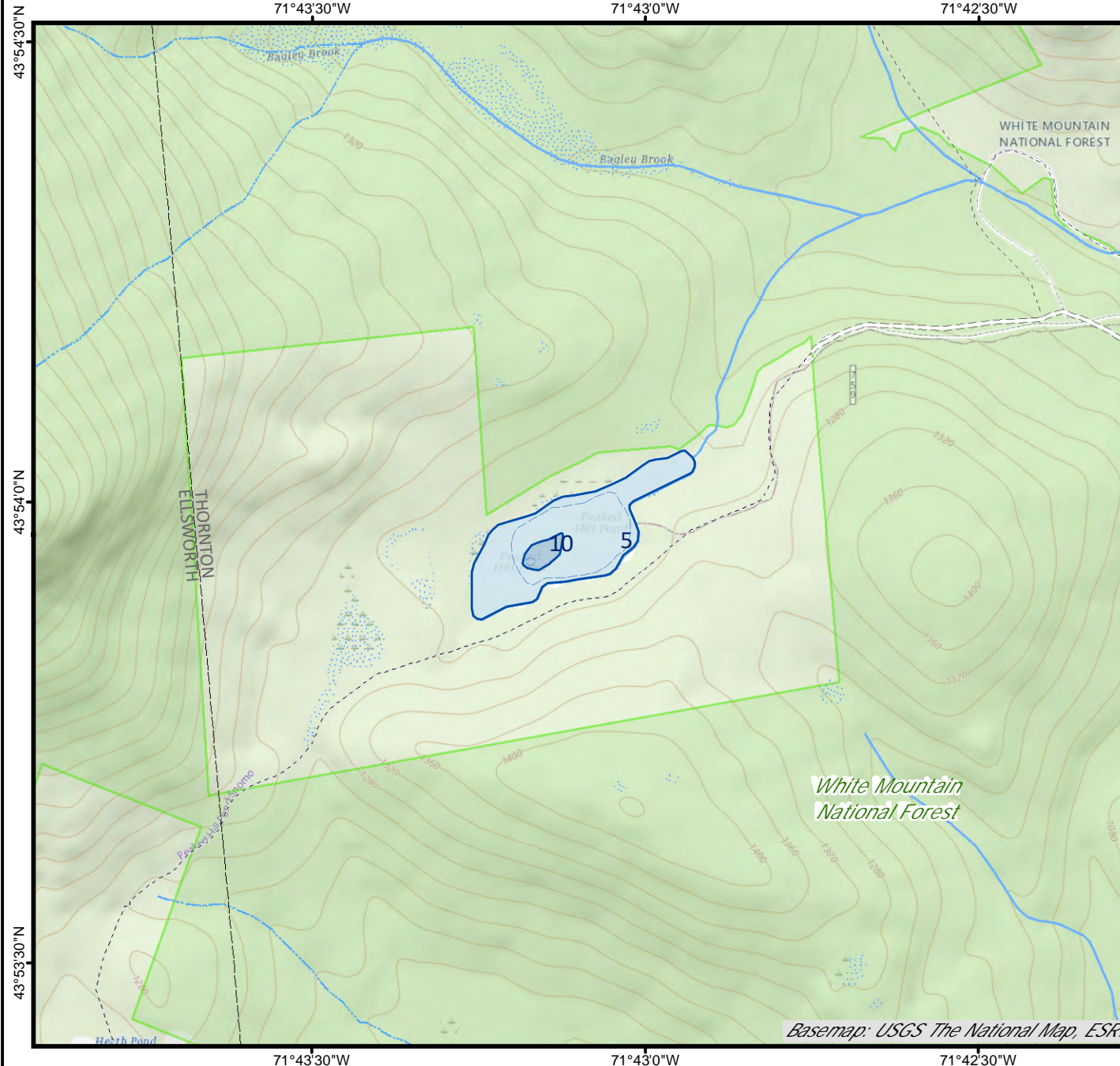
Contour

Building

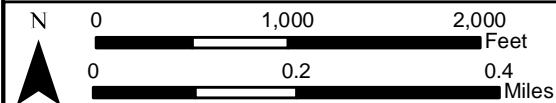
Source: USGS

Restricted
Access

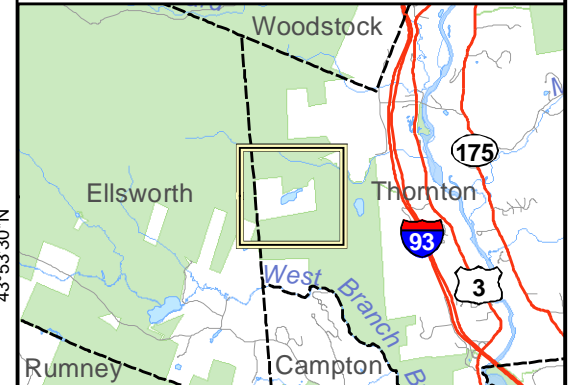
Conservation



Basemap: USGS The National Map, ESRI



Base map data from NH GRANIT at Earth Systems Research Center (UNH) and Open Street Map contributors. UNH, NH Fish & Game and cooperating agencies make no claim as to the validity or reliability or to any implied uses of these data. Not intended for navigation. Map prepared: June 2023



Directions: Rt 3 to Peaked Hill Pond Rd