

For fishing regulation information, please refer to the NHFGD Freshwater Fishing Digest.

Contact: NHFGD Region 2 (Lakes Region), New Hampton  
E-mail: [reg2@wildlife.nh.gov](mailto:reg2@wildlife.nh.gov) Phone: 603-744-5470

## WAUKEENA LAKE (Pleasant) Danbury

**FISHERY:** Coldwater **ACRES:** 56

**TROPHIC LEVEL:** MESO

**AVG. DEPTH:** 4 **MAX. DEPTH:** 20

**SPECIES:** EBT,RT

**ADDITIONAL INFO:** Stocked; trout pond;  
no petro motors

**ACCESS:** gravel ramp, small trailers

Please contact NH Dept of Safety, Marine Patrol  
for info. on water body/boat/motor restrictions:  
(603) 293-2037 [www.nh.gov/safety](http://www.nh.gov/safety)

### Access site to Public Waters



**Cartop**

*Water access data: NH Office  
of Planning and Development*



**Shorebank**



**Ramp**

Bathymetry depth in feet, if available

Bathymetry data provided by the NH Dept. of  
Environmental Services, Watershed Mgt Bureau

Town boundary

Primary Route

Road or Street

Trail or other

Stream or Shoreline

Surface Water

Wetland

Conservation or  
Public land

Cleared

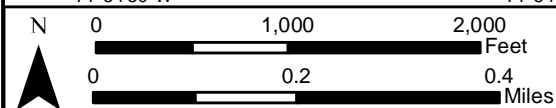
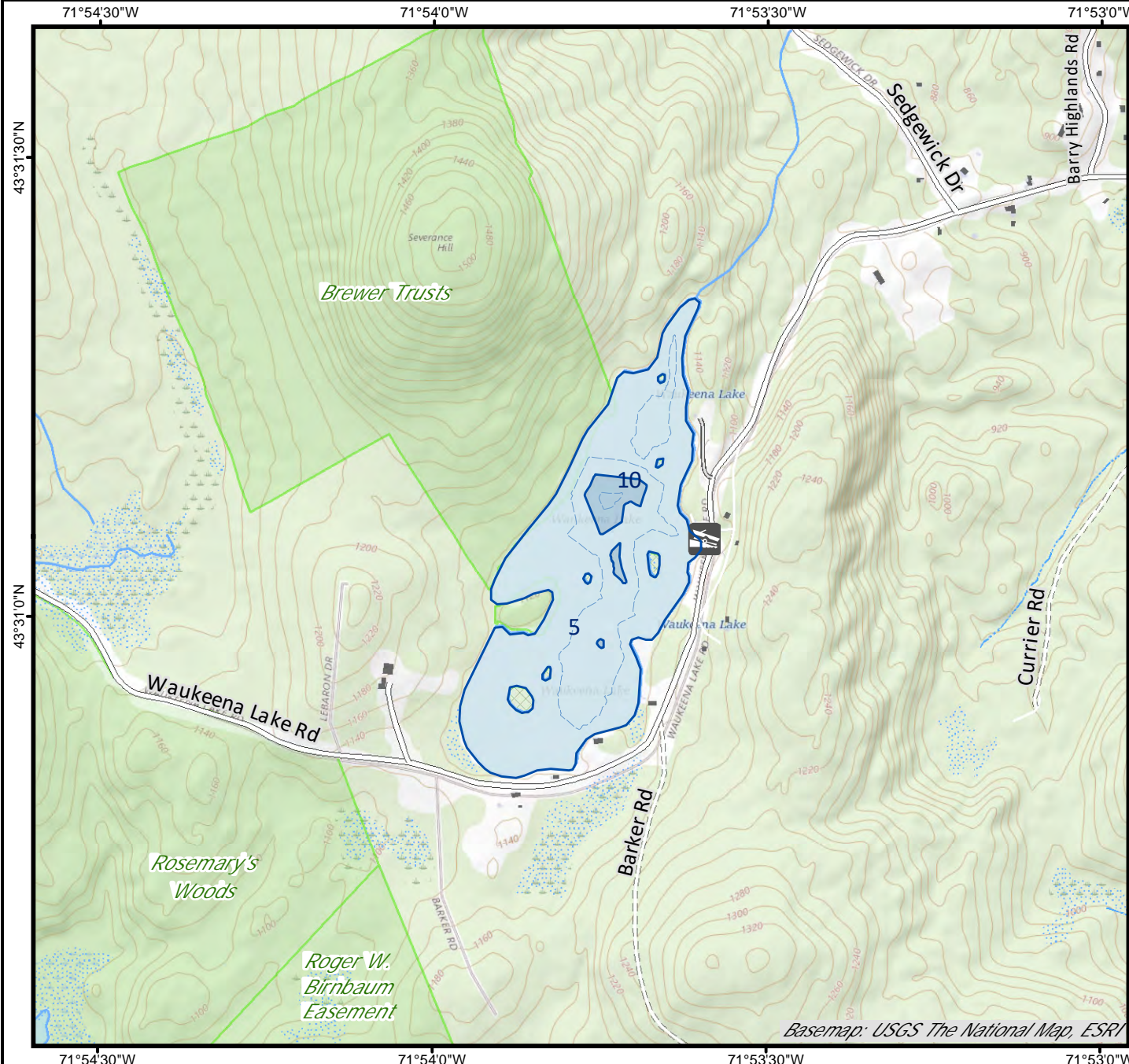
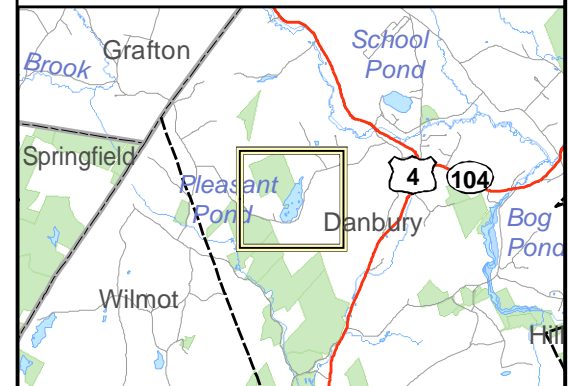
Forest

Contour

Building

*Source: USGS*

Restricted  
Access  
Conservation



Base map data from NH GRANIT at Earth Systems Research Center (UNH) and Open Street Map contributors. UNH, NH Fish & Game and cooperating agencies make no claim as to the validity or reliability or to any implied uses of these data. Not intended for navigation. Map prepared: June 2023

**Directions:** Rt 4 to Turnpike Rd to  
Waukeena Lake Rd, E shore