

For fishing regulation information, please refer to the NHFGD Freshwater Fishing Digest.

Contact: NHFGD Region 2 (Lakes Region), New Hampton  
E-mail: [reg2@wildlife.nh.gov](mailto:reg2@wildlife.nh.gov) Phone: 603-744-5470

## PINE RIVER POND Wakefield

**FISHERY:** Warmwater **ACRES:** 570

**TROPHIC LEVEL:** MESO

**AVG. DEPTH:** 10 **MAX. DEPTH:** 55

**SPECIES:** SMB,LMB,ECP,BBH,BC

ADDITIONAL INFO:

ACCESS: cartop access; contact Town of Wakefield

Please contact NH Dept of Safety, Marine Patrol for info. on water body/boat/motor restrictions:  
(603) 293-2037 [www.nh.gov/safety](http://www.nh.gov/safety)

Access site to Public Waters



Canoe/cartop

Access data: NH Office of Strategic Initiatives



Shorebank



Ramp

Bathymetry depth in feet, if available  
Bathymetry provided by the NH Dept of Environmental Services, Watershed Mgmt Bureau

Town boundary

Primary Route

Road or Street

Trail or other

Stream or Shoreline

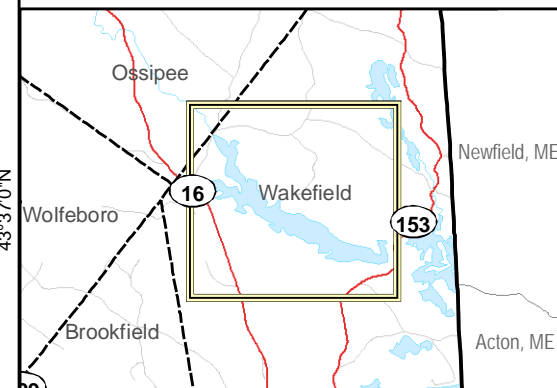
Surface Water

Wetland

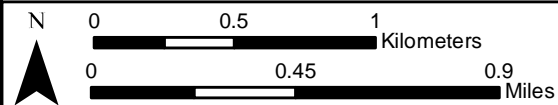
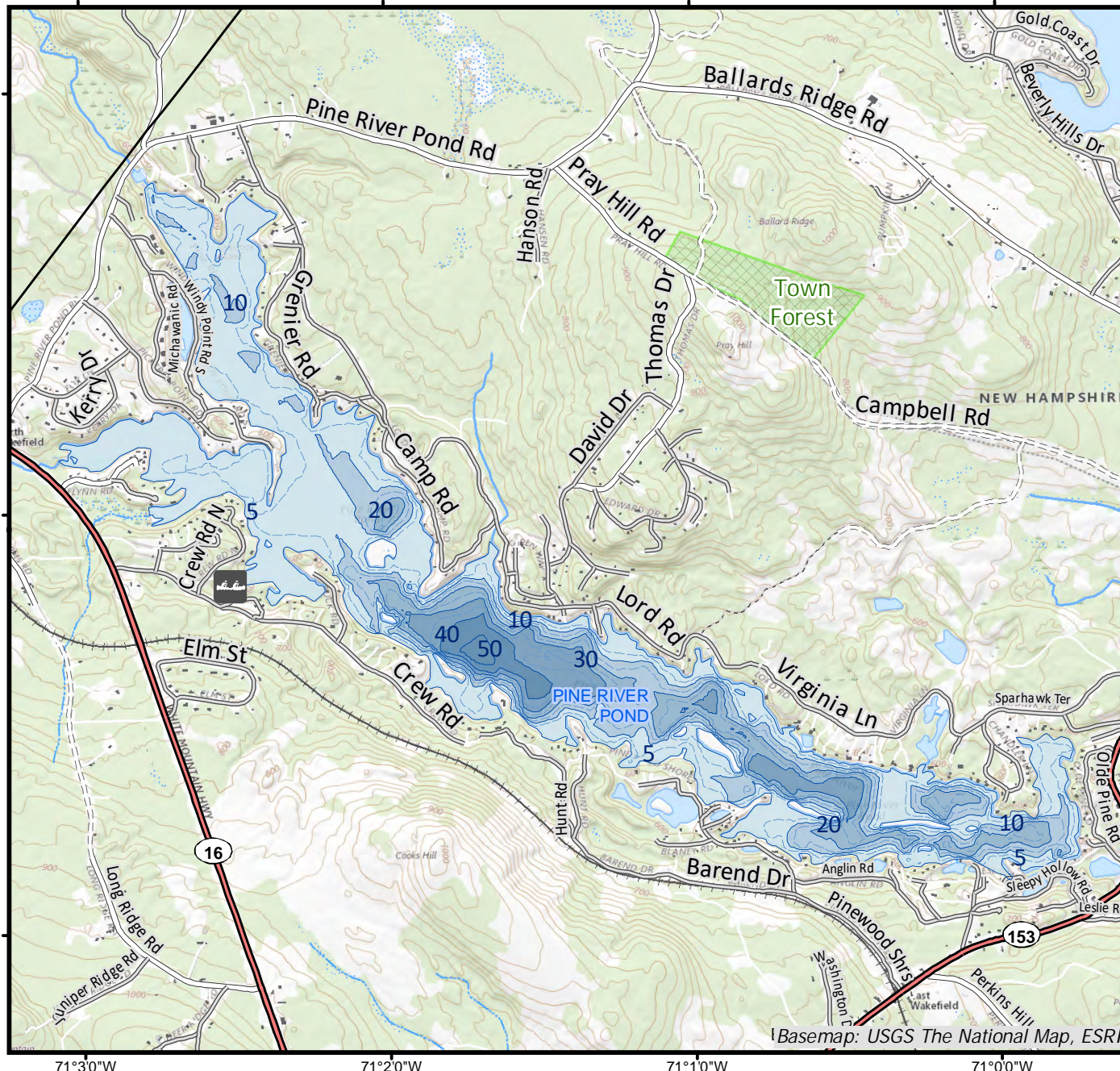
Conservation or Public land

Cleared Forest  
 Contour  
 Building  
Source: USGS

Restricted Access Conservation



Directions: Rt 16 to Crew Rd



Base map data from NH GRANIT at Earth Systems Research Center (UNH) and Open Street Map contributors. UNH, NH Fish & Game and cooperating agencies make no claim as to the validity or reliability or to any implied uses of these data. Not intended for navigation. Map prepared: June 2023