

For fishing regulation information, please refer to the NHFGD Freshwater Fishing Digest.

Contact: NHFGD Region 4 (Southwest NH), Keene  
E-mail: [reg4@wildlife.nh.gov](mailto:reg4@wildlife.nh.gov) Phone: 603-352-9669

## SPoonwood Lake Nelson

**FISHERY:** Cold/Warm **ACRES:** 159

**TROPHIC LEVEL:** OLIGO

**AVG. DEPTH:** 41 **MAX. DEPTH:** 70

**SPECIES:** EBT,LT,SMB,ECP,BBH,RS,YP

**ADDITIONAL INFO:** Stocked; trout pond; electric motors only <50 lbs thr.

**ACCESS:** access via Nubanusit, portage over dam

Please contact NH Dept of Safety, Marine Patrol for info. on water body/boat/motor restrictions: (603) 293-2037 [www.nh.gov/safety](http://www.nh.gov/safety)

### Access site to Public Waters



Cartop

Water access data: NH Office of Planning and Development



Shorebank



Ramp

~ Bathymetry depth in feet, if available

Bathymetry data provided by the NH Dept. of Environmental Services, Watershed Mgt Bureau

— Town boundary

— Primary Route

— Road or Street

.... Trail or other

~ Stream or Shoreline

Surface Water

Wetland

Conservation or Public land

Cleared

Forest

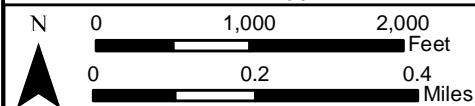
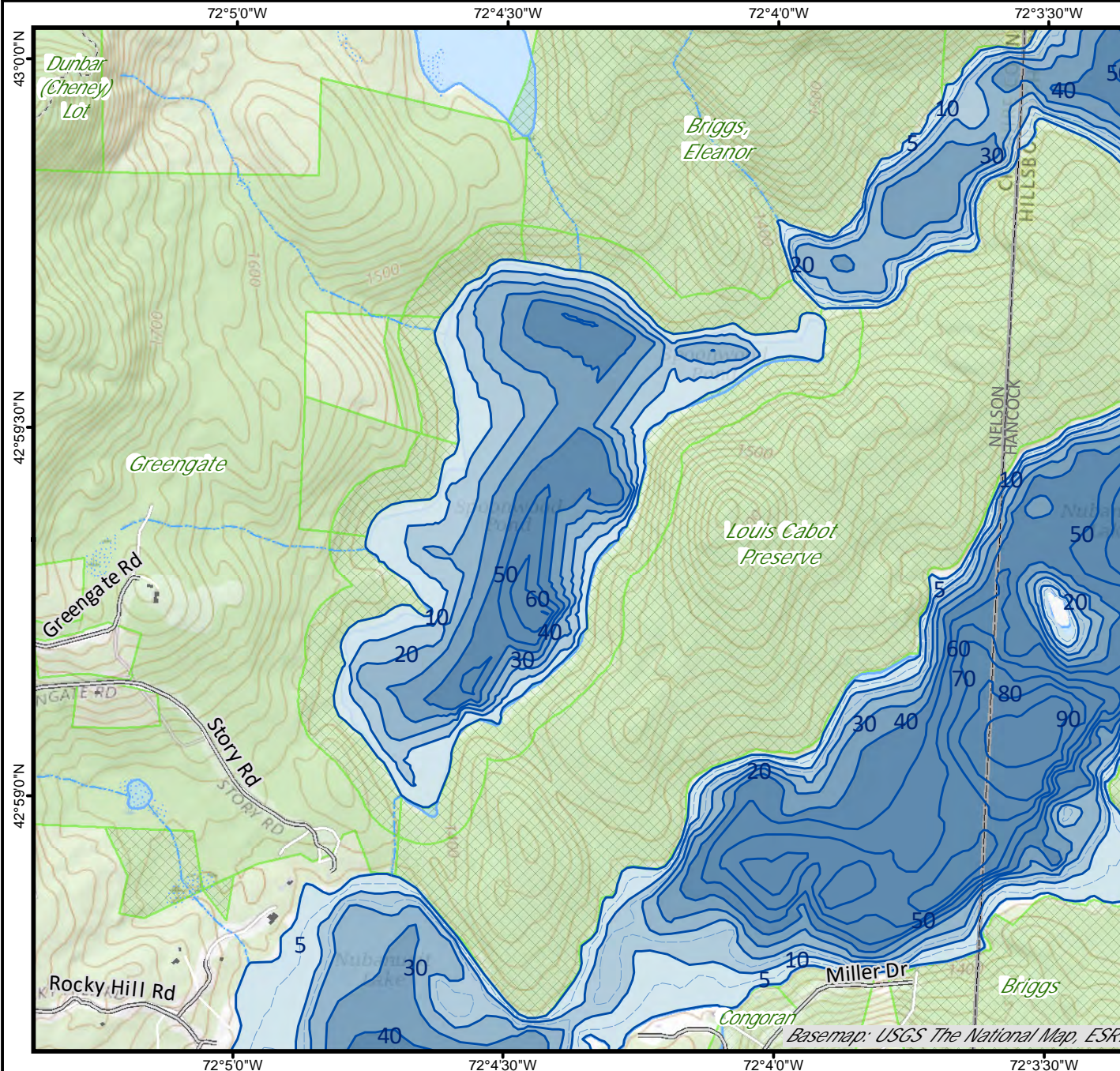
Contour

Building

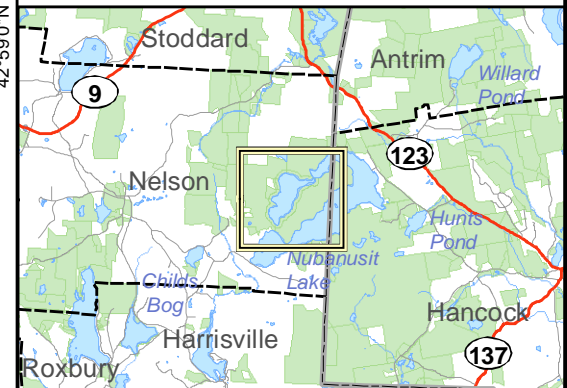
Source: USGS

Restricted Access

Conservation



Base map data from NH GRANIT at Earth Systems Research Center (UNH) and Open Street Map contributors. UNH, NH Fish & Game and cooperating agencies make no claim as to the validity or reliability or to any implied uses of these data. Not intended for navigation. Map prepared: June 2023



**Directions:** Rt 123 to Hunts Pond Rd, 1.6 mi to Nubanusit access