

For fishing regulation information, please refer to the NHFGD Freshwater Fishing Digest.

Contact: NHFGD Region 4 (Southwest NH), Keene  
E-mail: [reg4@wildlife.nh.gov](mailto:reg4@wildlife.nh.gov) Phone: 603-352-9669

## NUBANUSIT LAKE Nelson

**FISHERY:** Cold/Warm **ACRES:** 718

**TROPHIC LEVEL:** OLIGO

**AVG. DEPTH:** 40 **MAX. DEPTH:** 97

**SPECIES:** RT,LT,SMB,ECP,BBH,YP

**ADDITIONAL INFO:** Stocked; lake trout and/or salmon lake; boat restrict

**ACCESS:** ramp

Please contact NH Dept of Safety, Marine Patrol for info. on water body/boat/motor restrictions:  
(603) 293-2037 [www.nh.gov/safety](http://www.nh.gov/safety)

### Access site to Public Waters



Cartop

Water access data: NH Office of Planning and Development



Shorebank



Ramp

Bathymetry depth in feet, if available

Bathymetry data provided by the NH Dept. of Environmental Services, Watershed Mgt Bureau

Town boundary

Primary Route

Road or Street

Trail or other

Stream or Shoreline

Surface Water

Wetland

Conservation or Public land

Cleared

Forest

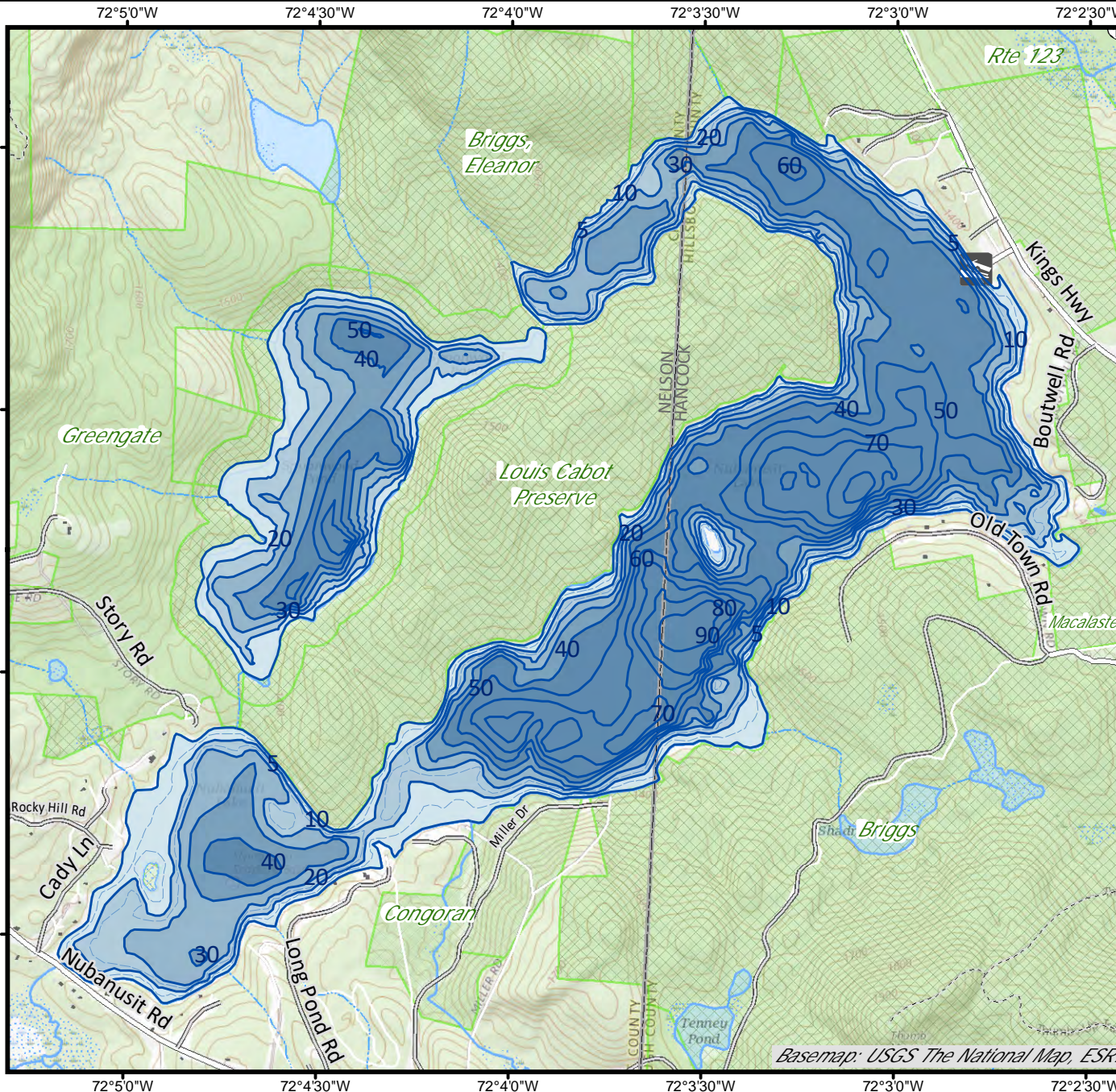
Contour

Building

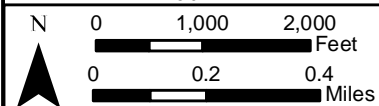
Source: USGS

Restricted Access

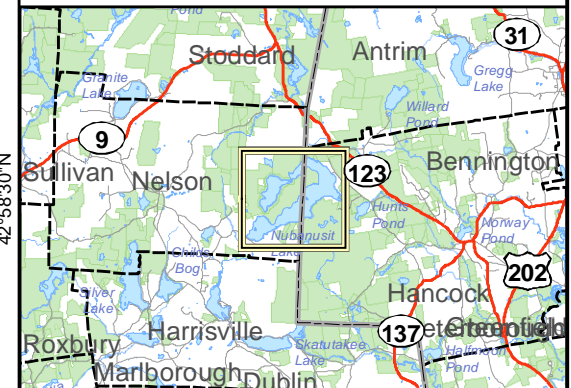
Conservation



Basemap: USGS The National Map, ESRI



Base map data from NH GRANIT at Earth Systems Research Center (UNH) and Open Street Map contributors. UNH, NH Fish & Game and cooperating agencies make no claim as to the validity or reliability or to any implied uses of these data. Not intended for navigation. Map prepared: June 2023



**Directions:** Rt 123 to Hunts Pond Rd, past Hunts Pond to ramp



# NUBANUSIT LAKE DEPTH CONTOUR CHART

PREPARED AND PUBLISHED BY  
THE NEW HAMPSHIRE FISH & GAME DEPARTMENT

FIELD DATA COLLECTED AS A SEGMENT OF  
DINGELL-JOHNSON FEDERAL AID PROJECT F 10 R  
FEBRUARY 1966

