

For fishing regulation information, please refer to the NHFGD Freshwater Fishing Digest.

Contact: NHFGD Region 2 (Lakes Region), New Hampton
E-mail: reg2@wildlife.nh.gov Phone: 603-744-5470

GREAT EAST LAKE Wakefield

FISHERY: Cold/Warm **ACRES:** 1825

TROPHIC LEVEL: OLIGO

AVG. DEPTH: 35 **MAX. DEPTH:** 102

SPECIES: RT,BT,LT,SMB,LMB,
ECP,BBH,WP,BC,BG

ADDITIONAL INFO: Stocked

ACCESS: Maine boat ramp

Please contact NH Dept of Safety, Marine Patrol for info. on water body/boat/motor restrictions:
(603) 293-2037 www.nh.gov/safety

Access site to Public Waters



Canoe/cartop

Access data: NH Office of Strategic Initiatives



Shorebank



Ramp

Bathymetry depth in feet, if available
Bathymetry provided by the NH Dept of Environmental Services, Watershed Mgmt Bureau

Town boundary

Primary Route

Road or Street

Trail or other

Stream or Shoreline

Surface Water

Wetland

Conservation or Public land

Cleared

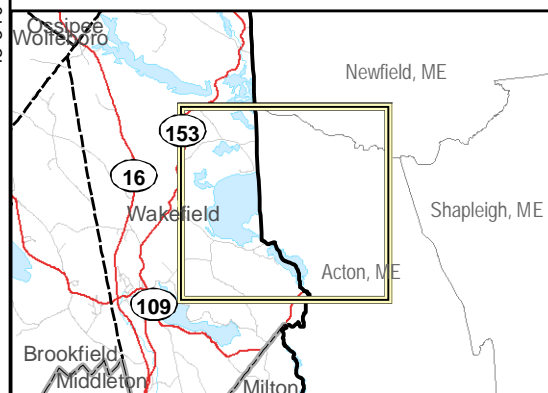
Forest

Contour

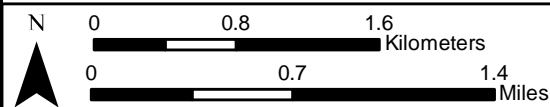
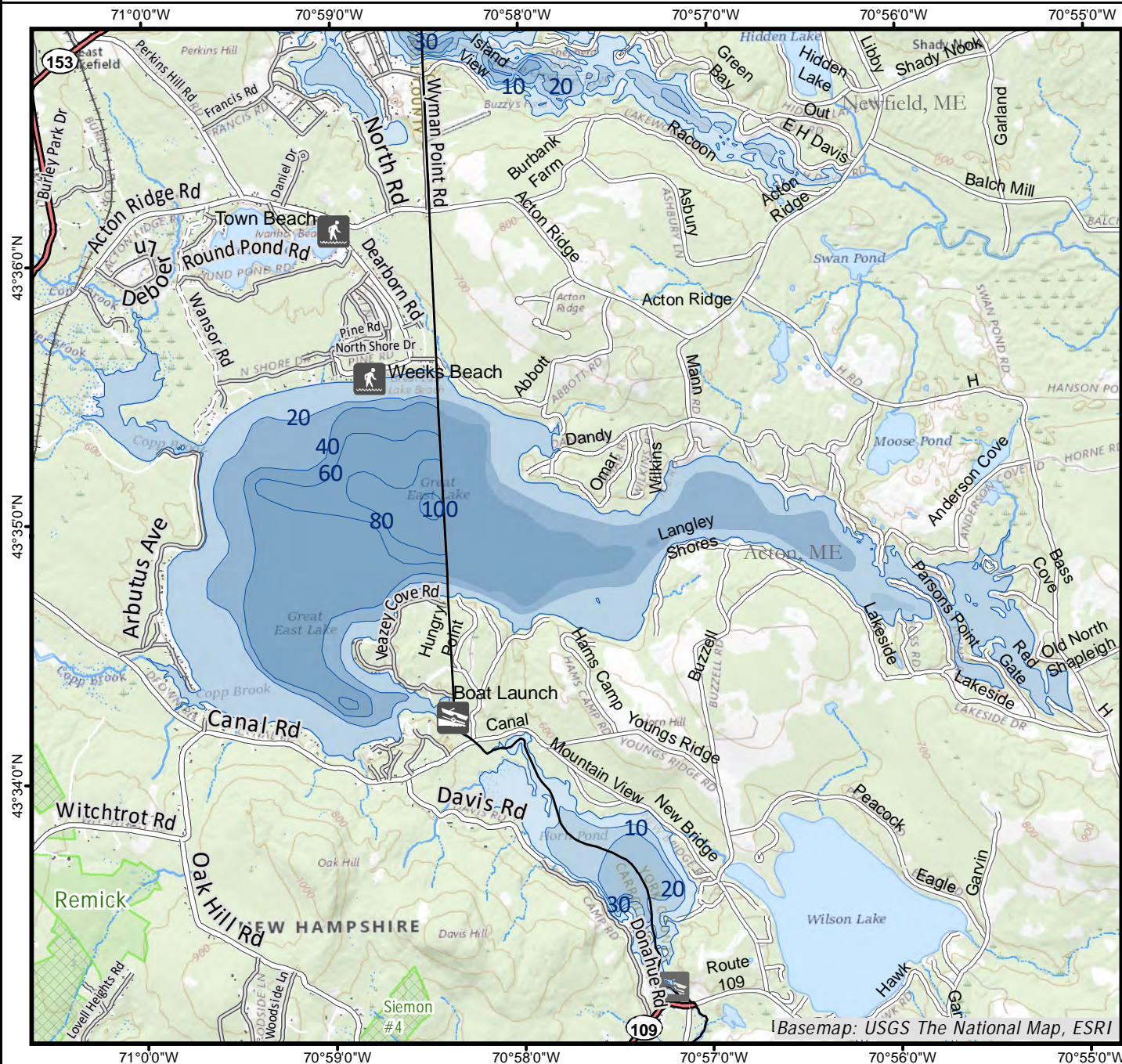
Building

Restricted Access Conservation

Source: USGS



Directions: Canal Rd



Base map data from NH GRANIT at Earth Systems Research Center (UNH) and Open Street Map contributors. UNH, NH Fish & Game and cooperating agencies make no claim as to the validity or reliability or to any implied uses of these data. Not intended for navigation. Map prepared: June 2023