

For fishing regulation information, please refer to the NHFGD Freshwater Fishing Digest.

Contact: NHFGD Region 2 (Lakes Region), New Hampton
E-mail: reg2@wildlife.nh.gov Phone: 603-744-5470

GUINEA POND
Sandwich


FISHERY: Coldwater	ACRES: 13
TROPHIC LEVEL: EUTRO	
AVG. DEPTH: 5	MAX. DEPTH: 21
SPECIES: EBT	


ADDITIONAL INFO: Stocked; trout pond; no motors


ACCESS: remote walk-in


Please contact NH Dept of Safety, Marine Patrol for info. on water body/boat/motor restrictions:
(603) 293-2037 www.nh.gov/safety

Access site to Public Waters

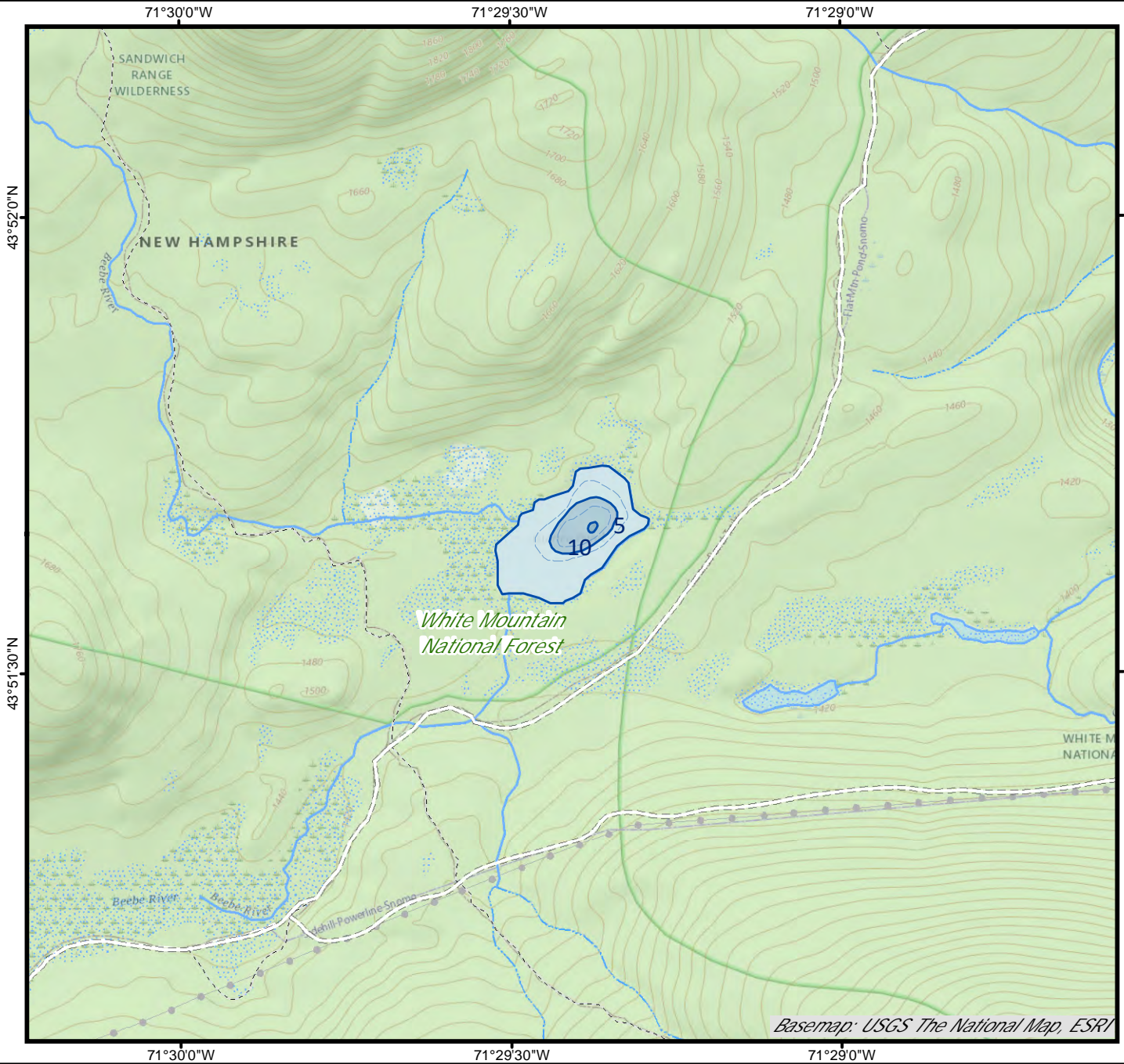
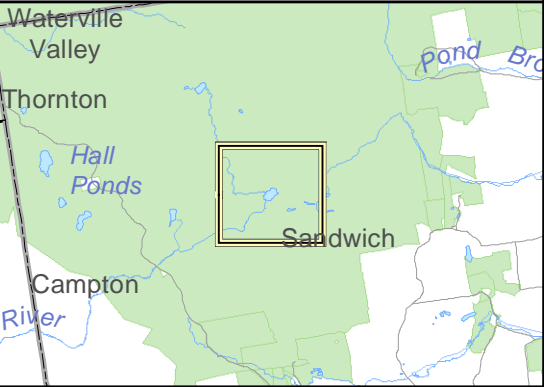
 Cartop *Water access data: NH Office of Planning and Development*

 Shorebank

 Ramp

 Bathymetry depth in feet, if available
Bathymetry data provided by the NH Dept. of Environmental Services, Watershed Mgt Bureau

- Town boundary
- Primary Route
- Road or Street
- Trail or other
- Stream or Shoreline
- Surface Water
- Wetland
- Conservation or Public land
- Cleared
- Forest
- Contour
- Building
- Source: USGS
- Restricted Access Conservation



Base map data from NH GRANIT at Earth Systems Research Center (UNH) and Open Street Map contributors. UNH, NH Fish & Game and cooperating agencies make no claim as to the validity or reliability or to any implied uses of these data. Not intended for navigation. Map prepared: June 2023

Directions: