

For fishing regulation information, please refer to the NHFGD Freshwater Fishing Digest.

Contact: NHFGD Region 2 (Lakes Region), New Hampton  
E-mail: [reg2@wildlife.nh.gov](mailto:reg2@wildlife.nh.gov) Phone: 603-744-5470

## SAWYER POND Livermore

**FISHERY:** Coldwater **ACRES:** 40  
**TROPHIC LEVEL:** OLIGO  
**AVG. DEPTH:** 40 **MAX. DEPTH:** 97  
**SPECIES:** EBT

ADDITIONAL INFO: Stocked; trout pond;  
no motors

ACCESS: remote walk-in

Please contact NH Dept of Safety, Marine Patrol for info. on water body/boat/motor restrictions:  
(603) 293-2037 [www.nh.gov/safety](http://www.nh.gov/safety)

### Access site to Public Waters



Cartop

Water access data: NH Office of Planning and Development



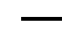
Shorebank



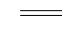
Ramp


 Bathymetry depth in feet, if available


Bathymetry data provided by the NH Dept. of Environmental Services, Watershed Mgt Bureau


 Town boundary

 Primary Route


 Road or Street

 Trail or other

 Stream or Shoreline

 Surface Water

 Wetland


 Conservation or Public land

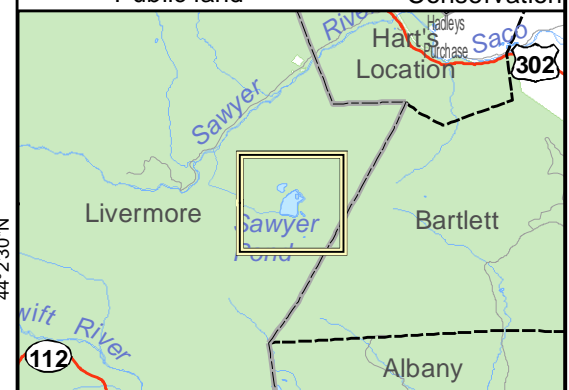
 Cleared Forest

 Contour

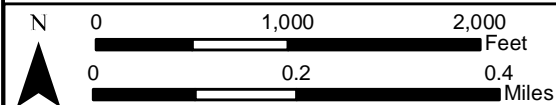
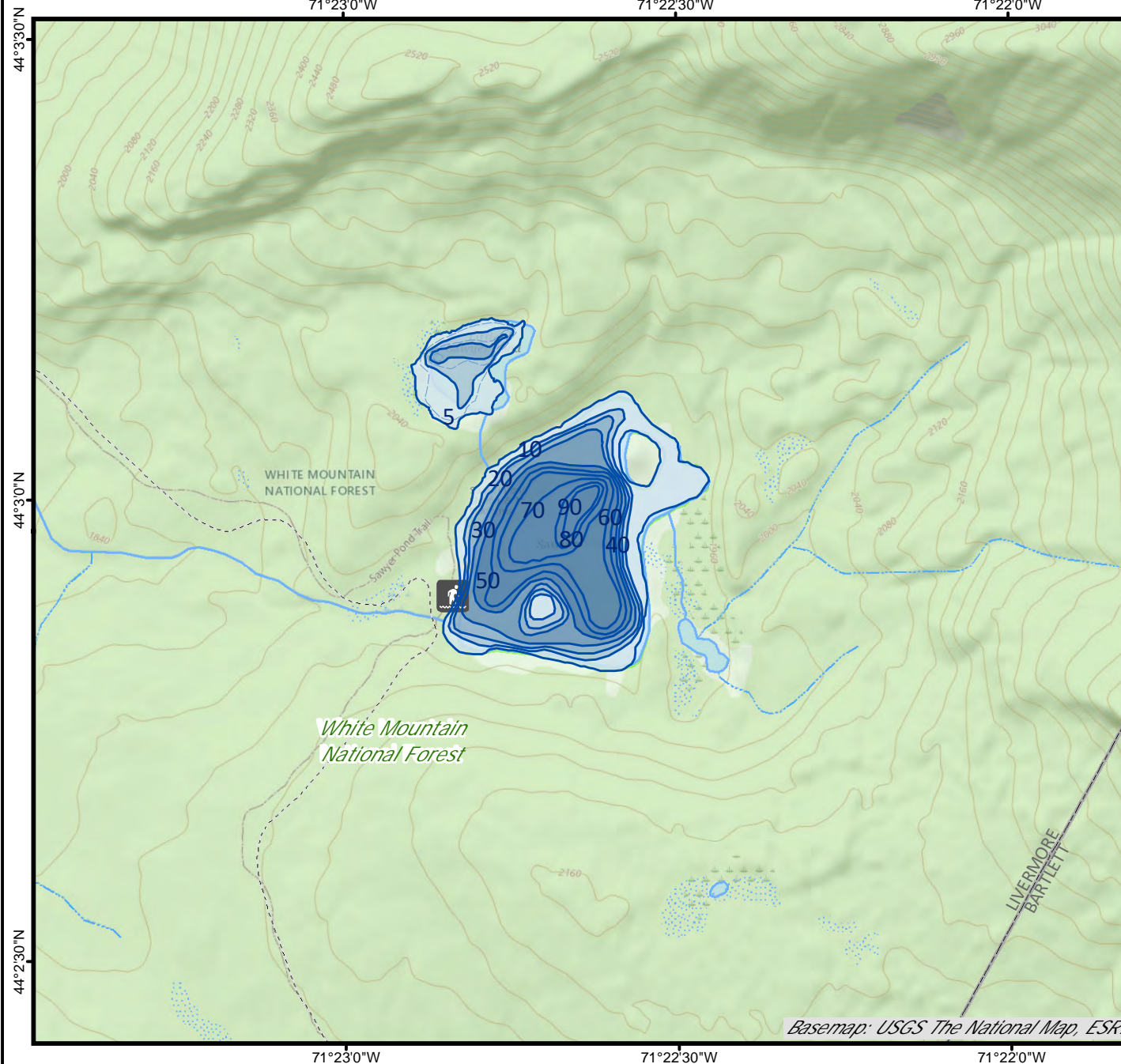
 Building

Source: USGS

 Restricted Access Conservation



Directions: Sawyer Pond Trail WMNF



Base map data from NH GRANIT at Earth Systems Research Center (UNH) and Open Street Map contributors. UNH, NH Fish & Game and cooperating agencies make no claim as to the validity or reliability or to any implied uses of these data. Not intended for navigation. Map prepared: June 2023