

For fishing regulation information, please refer to the NHFGD Freshwater Fishing Digest.

Contact: NHFGD Region 2 (Lakes Region), New Hampton  
E-mail: [reg2@wildlife.nh.gov](mailto:reg2@wildlife.nh.gov) Phone: 603-744-5470

## BERRY BAY Freedom

**FISHERY:** Cold/Warm **ACRES:** 153

**TROPHIC LEVEL:** OLIGO

**AVG. DEPTH:** 12 **MAX. DEPTH:** 38

**SPECIES:** LMB,SMB,RT,LLS,ECP,  
YP,WP,CSF,BBH

**ADDITIONAL INFO:**

**ACCESS:** Pine River Boat Launch Rt 25, or  
Cartop at Berry Bay

Please contact NH Dept of Safety, Marine Patrol  
for info. on water body/boat/motor restrictions:  
(603) 293-2037 [www.nh.gov/safety](http://www.nh.gov/safety)


### Access site to Public Waters

 Cartop

*Water access data: NH Office  
of Planning and Development*

 Shorebank

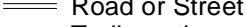
 Ramp

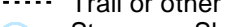
 Bathymetry depth in feet, if available

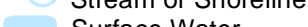
Bathymetry data provided by the NH Dept. of  
Environmental Services, Watershed Mgt Bureau

 Town boundary

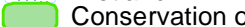
 Primary Route


 Road or Street

 Trail or other

 Stream or Shoreline

 Surface Water

 Wetland

 Conservation or  
Public land

 Cleared

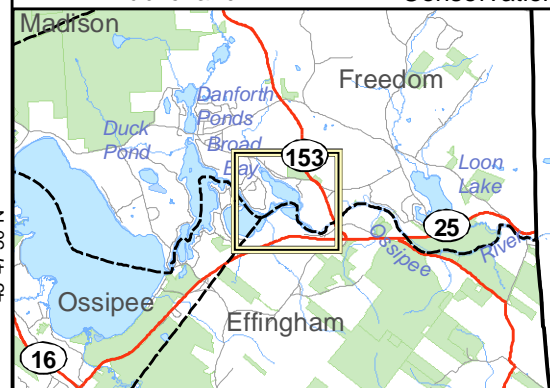
 Forest

 Contour

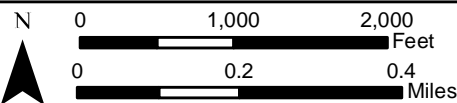
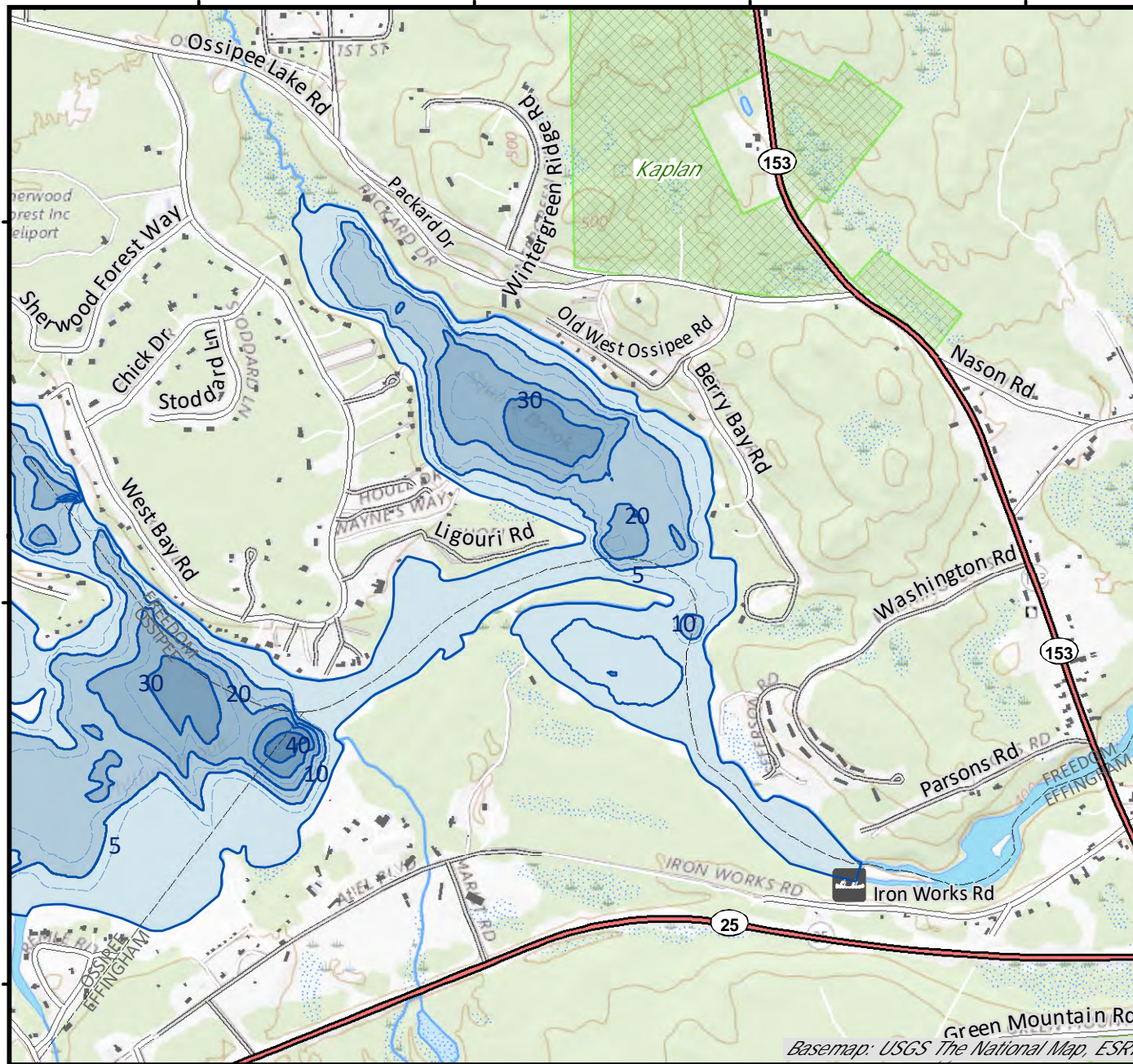
 Building

*Source: USGS*

 Restricted  
Access  
Conservation



**Directions:** near int. Route 25 and Rt 153



Base map data from NH GRANIT at Earth Systems Research Center (UNH) and Open Street Map contributors. UNH, NH Fish & Game and cooperating agencies make no claim as to the validity or reliability or to any implied uses of these data. Not intended for navigation. Map prepared: June 2023