

For fishing regulation information, please refer to the NHFGD Freshwater Fishing Digest.

Contact: NHFGD Inland Fisheries Division, Concord
E-mail: fish@wildlife.nh.gov Phone: 603-271-2501

HOODS POND Derry

FISHERY: Coldwater **ACRES:** 5

TROPHIC LEVEL: MESO

AVG. DEPTH: 3 **MAX. DEPTH:** 6

SPECIES: EBT,ECP,BBH,BG

ADDITIONAL INFO: Stocked

ACCESS: Hood Park

Please contact NH Dept of Safety, Marine Patrol for info. on water body/boat/motor restrictions:
(603) 293-2037 www.nh.gov/safety

Access site to Public Waters

 Cartop

Water access data: NH Office of Planning and Development

 Shorebank

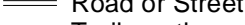
 Ramp


 Bathymetry depth in feet, if available

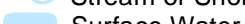
Bathymetry data provided by the NH Dept. of Environmental Services, Watershed Mgt Bureau

 Town boundary

 Primary Route

 Road or Street

 Trail or other

 Stream or Shoreline

 Surface Water

 Wetland

 Conservation or Public land

 Cleared

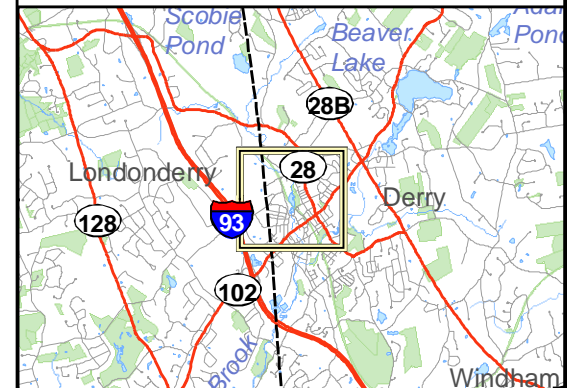
 Forest

 Contour

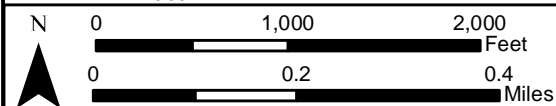
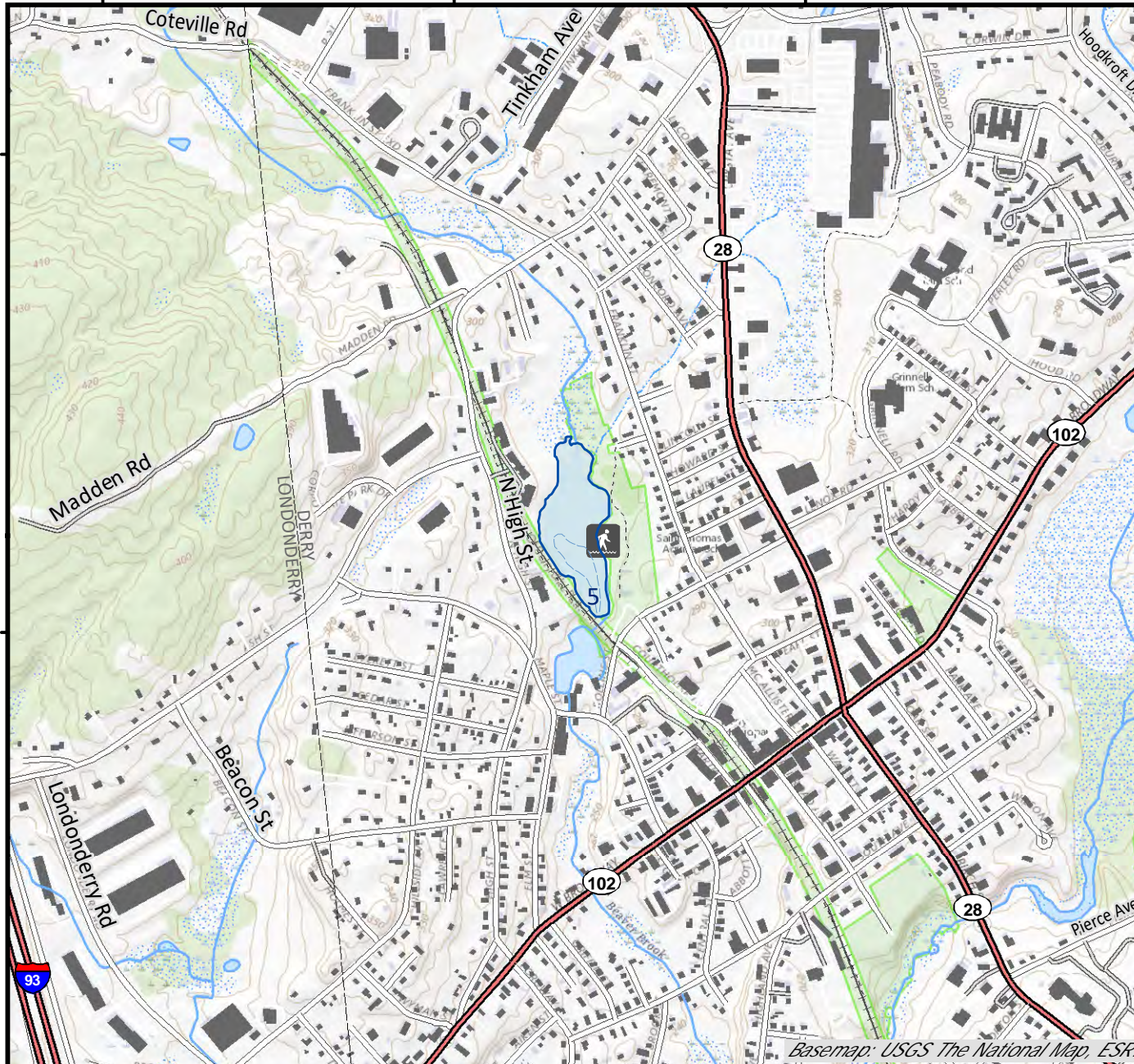
 Building

Source: USGS

 Restricted Access Conservation



Directions:



Base map data from NH GRANIT at Earth Systems Research Center (UNH) and Open Street Map contributors. UNH, NH Fish & Game and cooperating agencies make no claim as to the validity or reliability or to any implied uses of these data. Not intended for navigation. Map prepared: June 2023