

For fishing regulation information, please refer to the NHFGD Freshwater Fishing Digest.

Contact: NHFGD Region 4 (Southwest NH), Keene
E-mail: reg4@wildlife.nh.gov Phone: 603-352-9669

CENTER POND Nelson

FISHERY: Cold/Warm **ACRES:** 33

TROPHIC LEVEL: MESO

AVG. DEPTH: 16 **MAX. DEPTH:** 35

SPECIES: EBT,RT,LMB,BBH

ADDITIONAL INFO: Stocked; trout pond;
no motors

ACCESS: boat ramp

Please contact NH Dept of Safety, Marine Patrol
for info. on water body/boat/motor restrictions:
(603) 293-2037 www.nh.gov/safety

Access site to Public Waters



Cartop

*Water access data: NH Office
of Planning and Development*



Shorebank



Ramp

Bathymetry depth in feet, if available

Bathymetry data provided by the NH Dept. of
Environmental Services, Watershed Mgt Bureau

Town boundary

Primary Route

Road or Street

Trail or other

Stream or Shoreline

Surface Water

Wetland

Conservation or
Public land

Cleared

Forest

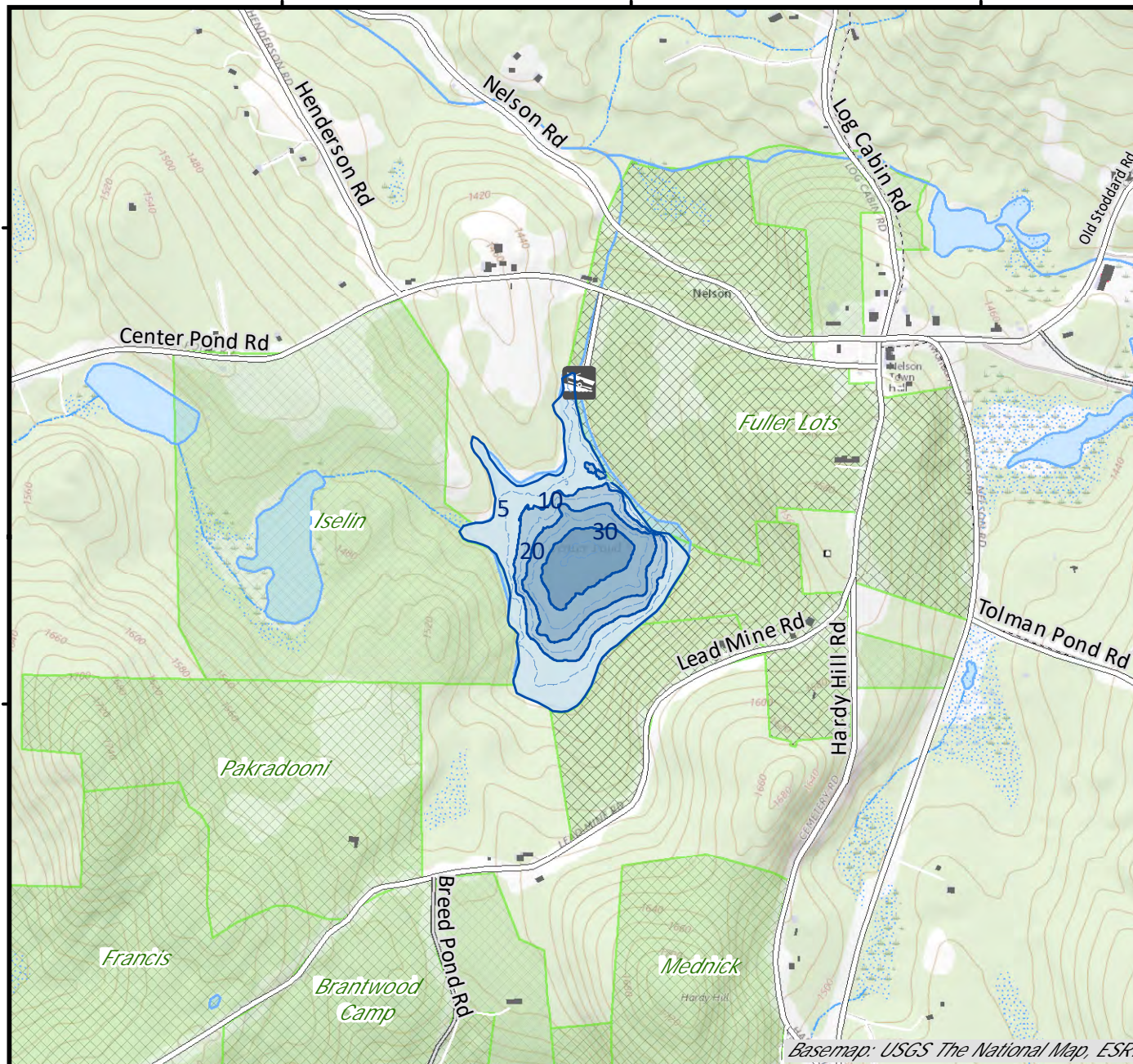
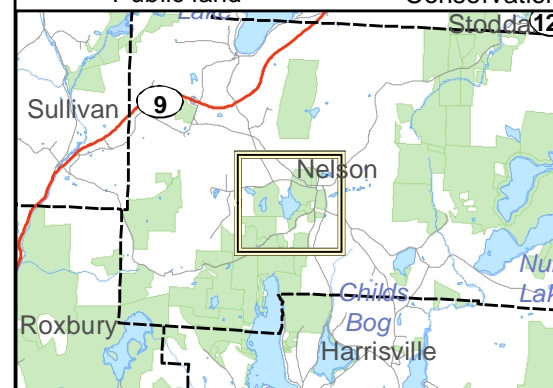
Contour

Building

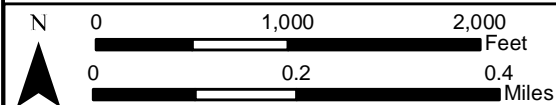
Source: USGS

Restricted
Access

Conservation



Basemap: USGS The National Map, ESRI



Base map data from NH GRANIT at Earth Systems Research Center (UNH) and Open Street Map contributors. UNH, NH Fish & Game and cooperating agencies make no claim as to the validity or reliability or to any implied uses of these data. Not intended for navigation. Map prepared: June 2023

Directions: Sullivan Rd to Center Pond Rd