

For fishing regulation information, please refer to the NHFGD Freshwater Fishing Digest.

Contact: NHFGD Region 4 (Southwest NH), Keene
E-mail: reg4@wildlife.nh.gov Phone: 603-352-9669

CONTOOCOOK LAKE Jaffrey, Rindge

FISHERY: Warmwater **ACRES:** 344

TROPHIC LEVEL: MESO

AVG. DEPTH: 7 **MAX. DEPTH:** 23

SPECIES: SMB,LMB,ECP,BBH,WP,BC,
BG,YP,CSF

ADDITIONAL INFO:

ACCESS: Town - gravel launch

Please contact NH Dept of Safety, Marine Patrol for info. on water body/boat/motor restrictions:
(603) 293-2037 www.nh.gov/safety

Access site to Public Waters

 Cartop


Water access data: NH Office of Planning and Development

 Shorebank

 Ramp


 Bathymetry depth in feet, if available

Bathymetry data provided by the NH Dept. of Environmental Services, Watershed Mgt Bureau

 Town boundary

 Primary Route


 Road or Street

 Trail or other

 Stream or Shoreline

 Surface Water

 Wetland

 Conservation or Public land

 Cleared

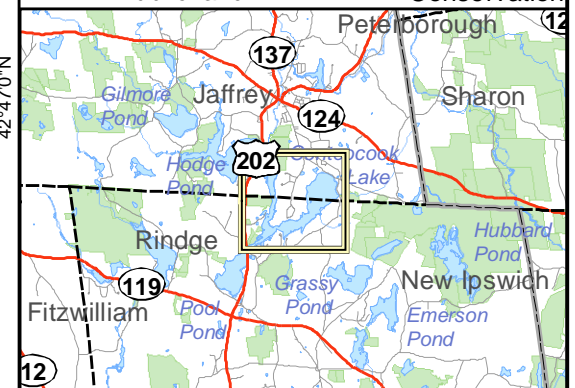
 Forest

 Contour

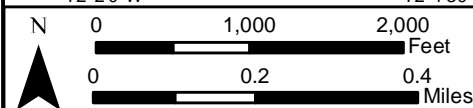
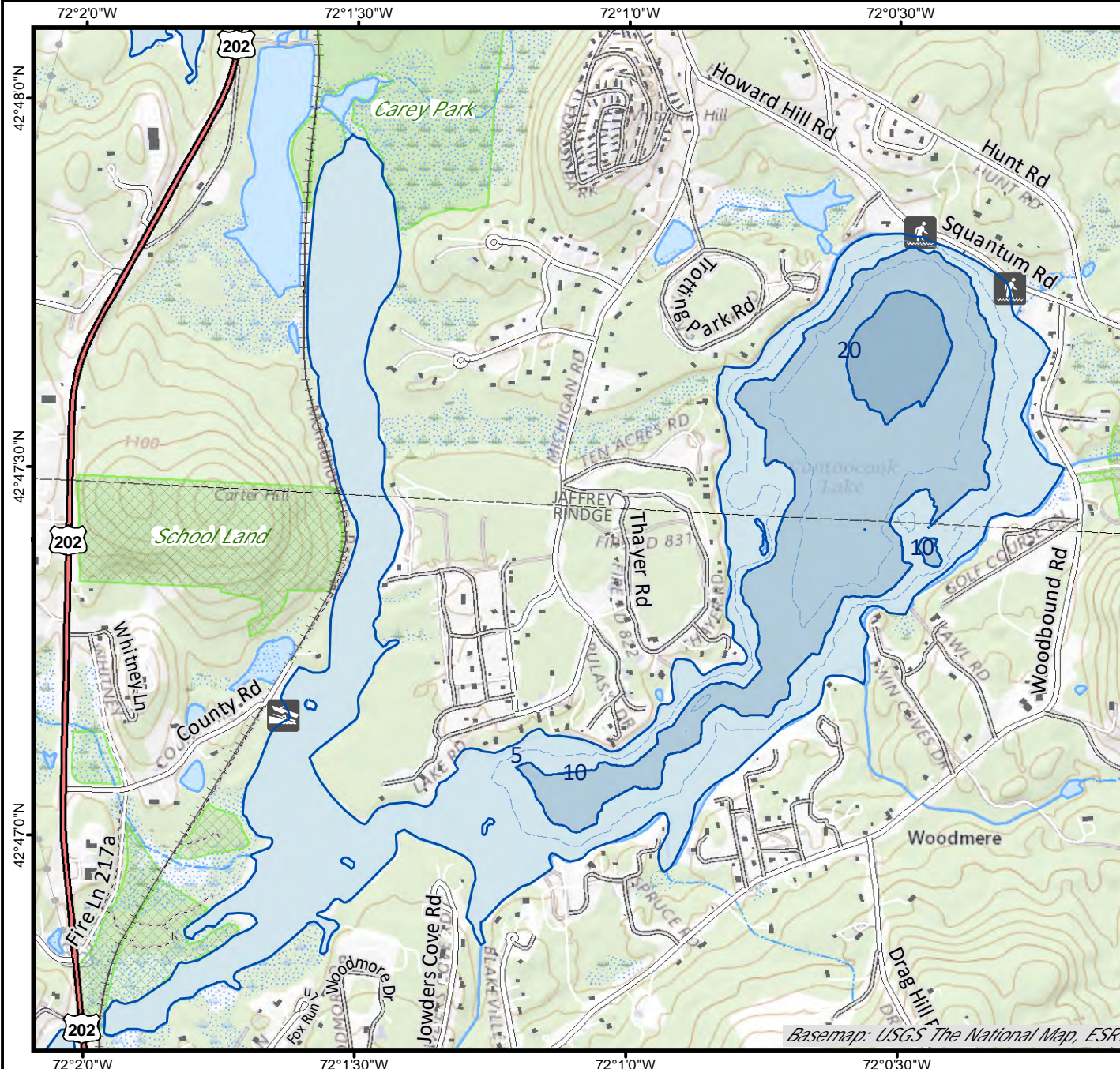
 Building

Source: USGS

 Restricted Access Conservation



Directions: Rt 202 to County Rd, 0.3 mi to ramp



Base map data from NH GRANIT at Earth Systems Research Center (UNH) and Open Street Map contributors. UNH, NH Fish & Game and cooperating agencies make no claim as to the validity or reliability or to any implied uses of these data. Not intended for navigation. Map prepared: June 2023