

For fishing regulation information, please refer to the NHFGD Freshwater Fishing Digest.

Contact: NHFGD Region 1 (North Country), Lancaster  
E-mail: [reg1@wildlife.nh.gov](mailto:reg1@wildlife.nh.gov) Phone: 603-788-3164

## Comerford Reservoir Littleton, Monroe

**FISHERY:** Cold/Warm **ACRES:** 1029

**TROPIC LEVEL:**

**AVG. DEPTH:** 0 **MAX. DEPTH:** 0

**SPECIES:** EBT,RT,BT,SMB,LMB,ECP,  
BBH,NP,BC,RB

**ADDITIONAL INFO:**

**ACCESS:** Waterford Bridge ramp,  
Comerford Dam portage

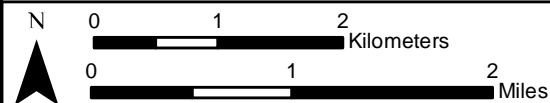
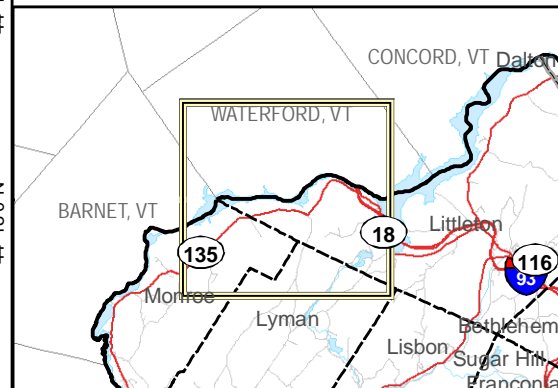
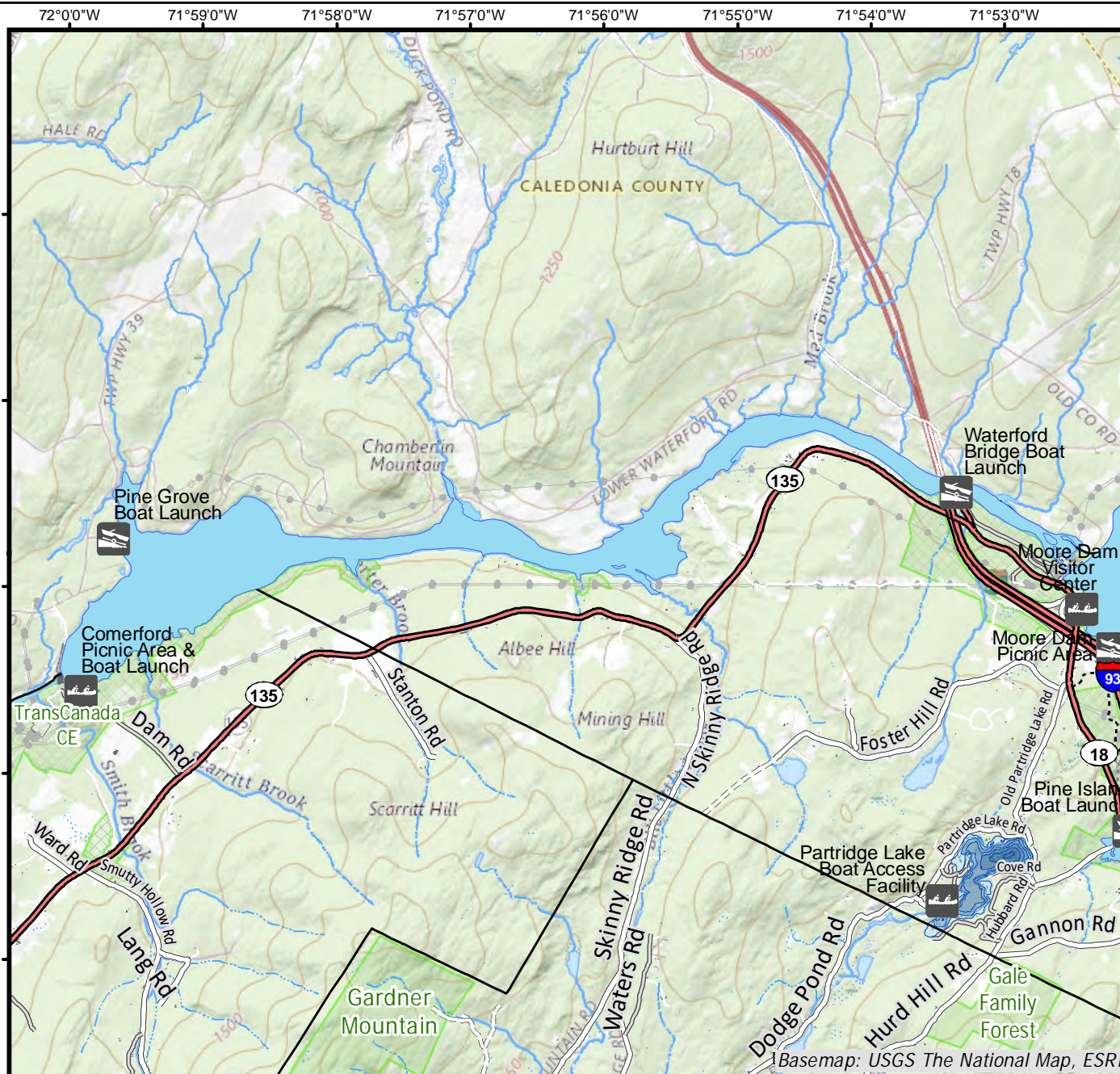
Please contact NH Dept of Safety, Marine Patrol  
for info. on water body/boat/motor restrictions:  
(603) 293-2037 [www.nh.gov/safety](http://www.nh.gov/safety)

**Access site to Public Waters**

- Canoe/cartop Access data: NH Office of Strategic Initiatives
- Shorebank
- Ramp

**Bathymetry** depth in feet, if available  
Bathymetry provided by the NH Dept of  
Environmental Services, Watershed Mgmt Bureau

- Town boundary
  - Primary Route
  - Road or Street
  - Trail or other
  - Stream or Shoreline
  - Surface Water
  - Wetland
  - Conservation or Public land
  - Restricted Access Conservation
  - Cleared Forest
  - Contour
  - Building
- Source: USGS



Base map data from NH GRANIT at Earth Systems Research Center (UNH) and Open Street Map contributors. UNH, NH Fish & Game and cooperating agencies make no claim as to the validity or reliability or to any implied uses of these data. Not intended for navigation. Map prepared: June 2023

**Directions:**