

For fishing regulation information, please refer to the NHFGD Freshwater Fishing Digest.

Contact: NHFGD Inland Fisheries Division, Concord
E-mail: fish@wildlife.nh.gov Phone: 603-271-2501

WHEELWRIGHT POND

Lee

FISHERY: Warmwater ACRES: 102

TROPIC LEVEL: MESO

AVG. DEPTH: 12 MAX. DEPTH: 31

SPECIES: SMB,LMB,ECP,BBH,WP,
BC,AE,YP

ADDITIONAL INFO:

ACCESS: No public boat access;
shorebank - town forest

Please contact NH Dept of Safety, Marine Patrol
for info. on water body/boat/motor restrictions:
(603) 293-2037 www.nh.gov/safety

Access site to Public Waters



Cartop

Water access data: NH Office
of Planning and Development



Shorebank



Ramp

~ Bathymetry depth in feet, if available

Bathymetry data provided by the NH Dept. of
Environmental Services, Watershed Mgt Bureau

— Town boundary

— Primary Route

— Road or Street

..... Trail or other

~ Stream or Shoreline

Surface Water

Wetland

Conservation or

Public land

Cleared

Forest

Contour

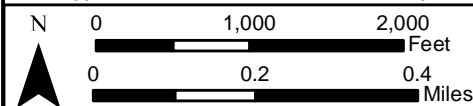
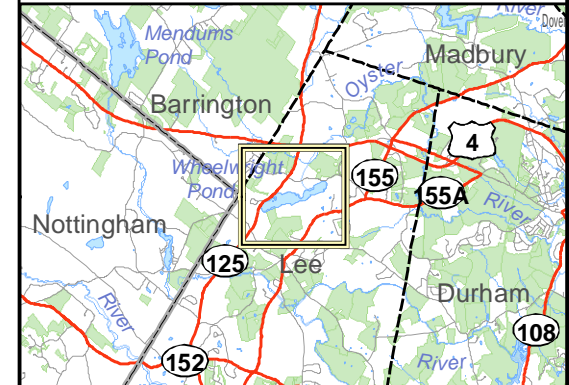
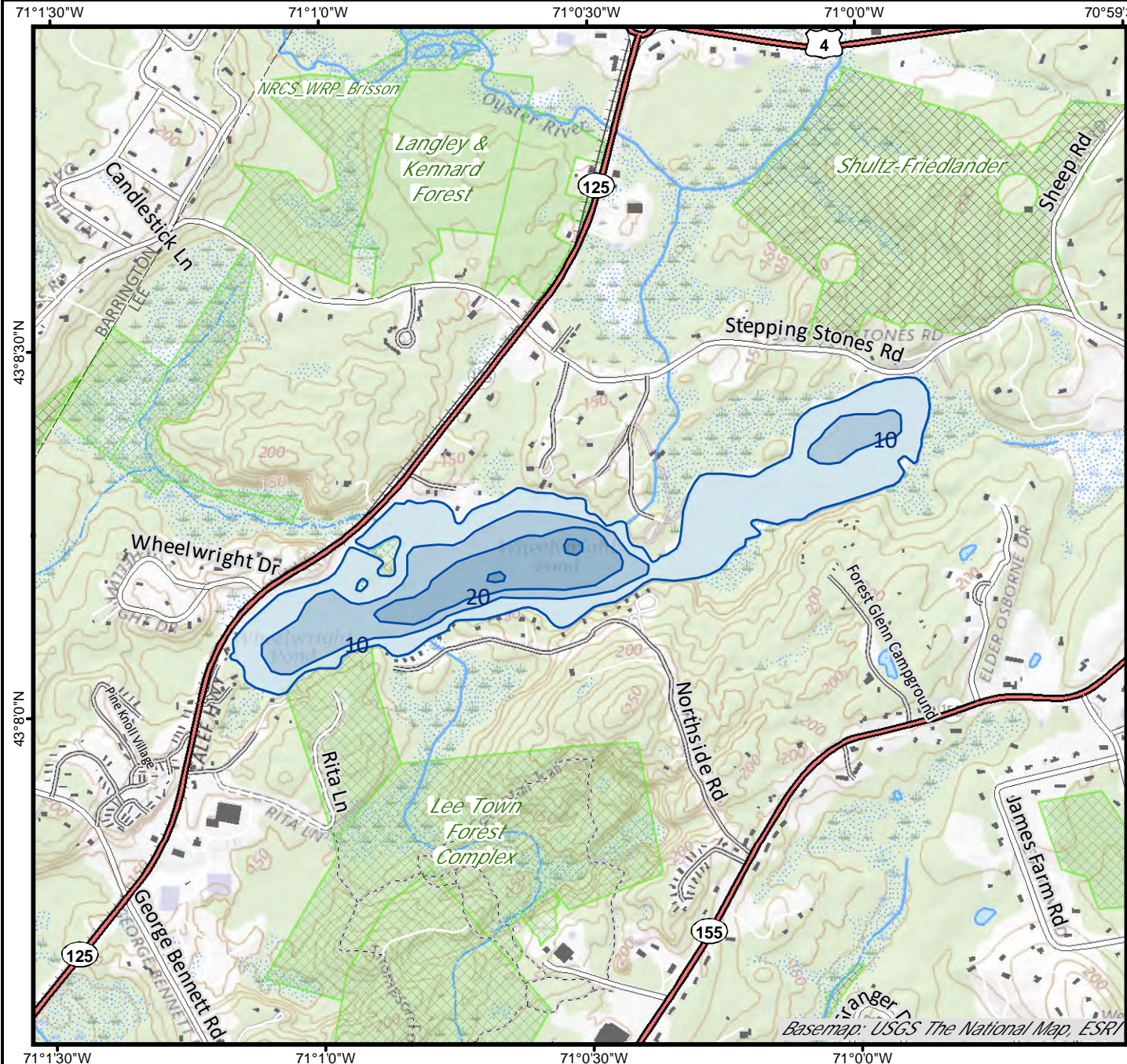
Building

Source: USGS

Restricted

Access

Conservation



Base map data from NH GRANIT at Earth Systems Research Center (UNH) and Open Street Map contributors. UNH, NH Fish & Game and cooperating agencies make no claim as to the validity or reliability or to any implied uses of these data. Not intended for navigation. Map prepared: June 2023

Directions: