

For fishing regulation information, please refer to the NHFGD Freshwater Fishing Digest.

Contact: NHFGD Region 2 (Lakes Region), New Hampton
E-mail: reg2@wildlife.nh.gov Phone: 603-744-5470

DERBY POND Canaan, Orange

FISHERY: Coldwater **ACRES:** 6

TROPHIC LEVEL: MESO

AVG. DEPTH: 5 **MAX. DEPTH:** 12

SPECIES: EBT

ADDITIONAL INFO:

ACCESS: remote

Please contact NH Dept of Safety, Marine Patrol for info. on water body/boat/motor restrictions:
(603) 293-2037 www.nh.gov/safety

Access site to Public Waters



Cartop

Water access data: NH Office of Planning and Development



Shorebank



Ramp



Bathymetry depth in feet, if available

Bathymetry data provided by the NH Dept. of Environmental Services, Watershed Mgt Bureau

— Town boundary

— Primary Route

— Road or Street

- - - Trail or other

~ Stream or Shoreline

Surface Water

Wetland

Conservation or Public land

Cleared

Forest

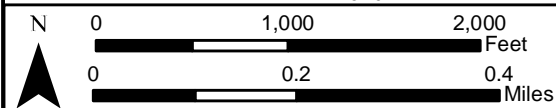
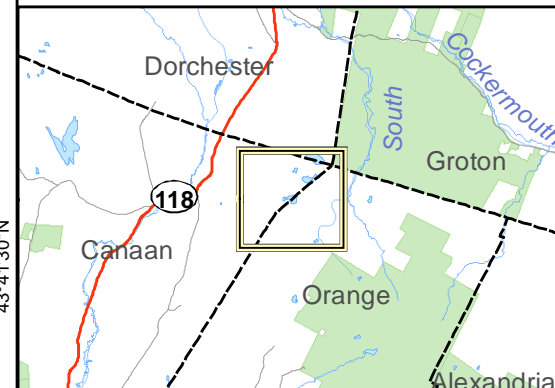
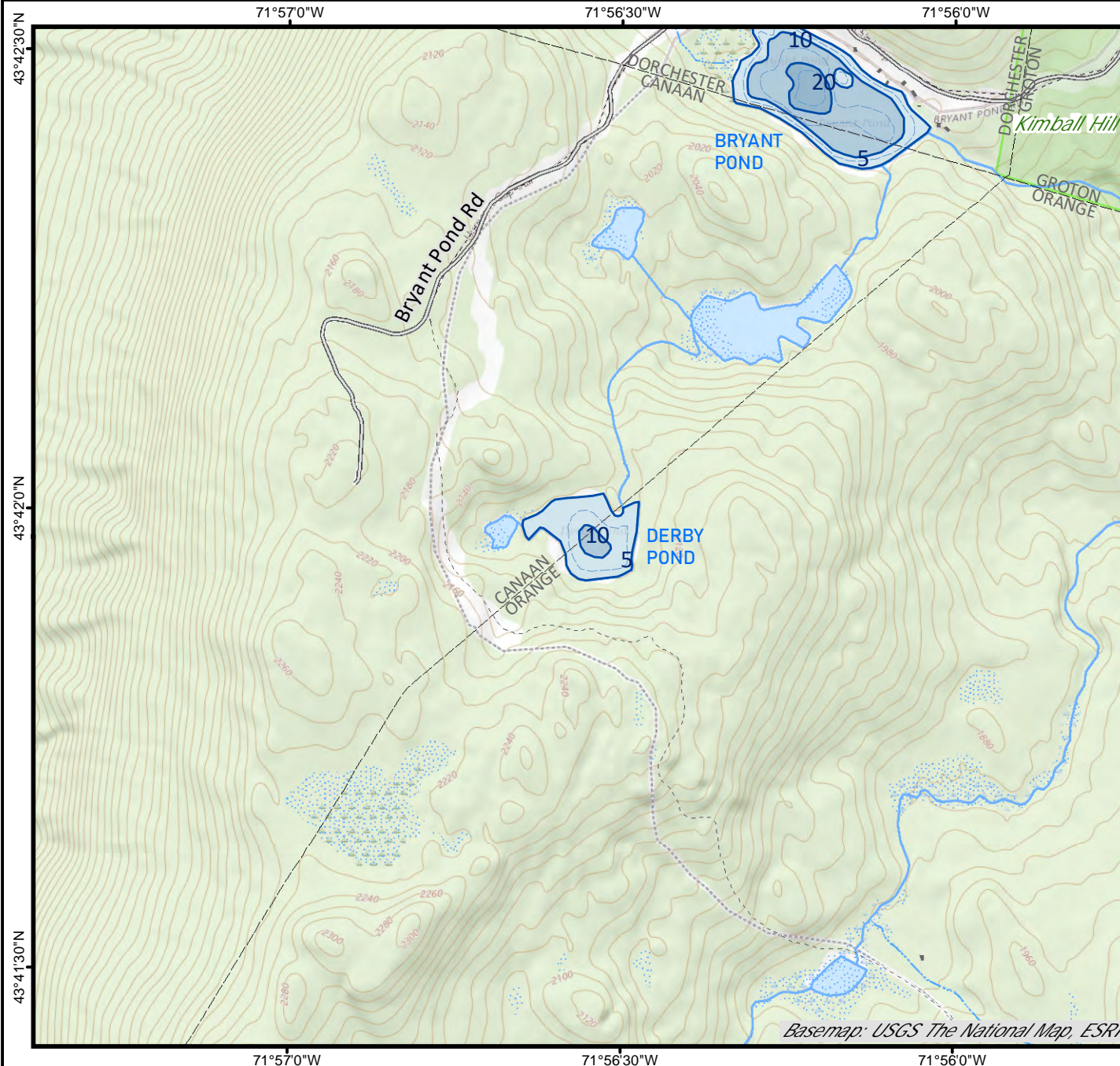
Contour

Building

Source: USGS

Restricted Access

Conservation



Base map data from NH GRANIT at Earth Systems Research Center (UNH) and Open Street Map contributors. UNH, NH Fish & Game and cooperating agencies make no claim as to the validity or reliability or to any implied uses of these data. Not intended for navigation. Map prepared: June 2023

Directions: